



ROYAL THAI

CROWNE PLAZA
CORRIDOR DESIGN
PROGRAM

Simple • Clean • Sophisticated





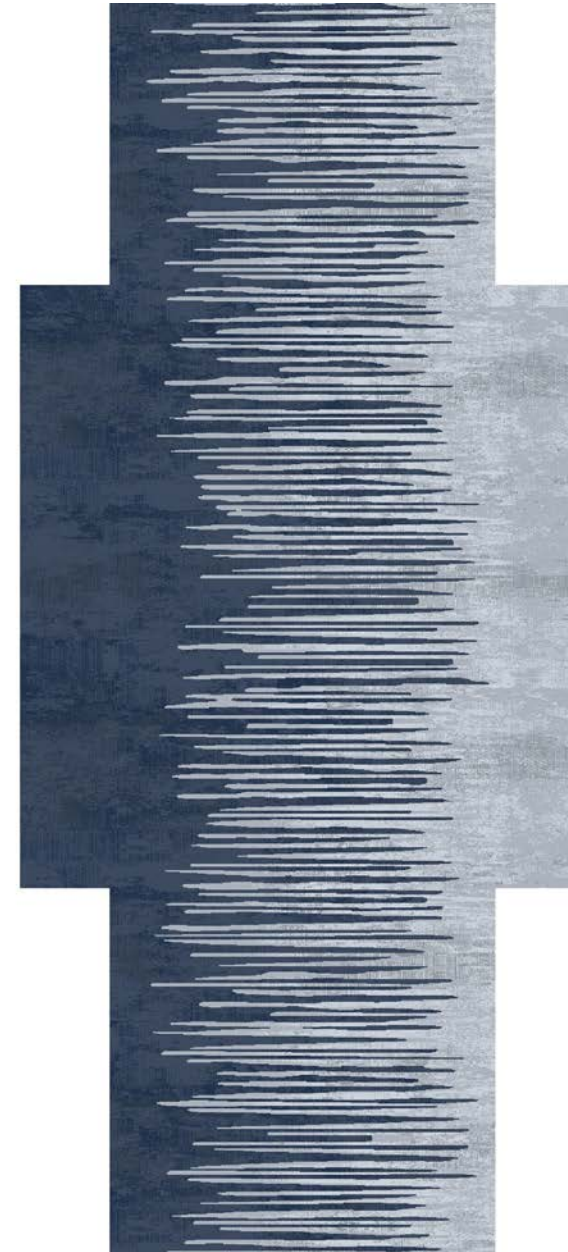
- 1
GR13
Ross
1.77%
- 2
GR20
Rowan
15.10%
- 3
GR06
Richard
4.06%
- 4
GR19
Miles
15.55%
- 7
GR05
Martin
3.63%
- 8
D333/5AA
1.35%
- 10
K323/17J
6.45%
- 11
K324/18J
5.41%
- 14
46.67%

Please sign and return this design rendering indicating your approval of scale, design intent, design repeat details, and colour placement. The colors referenced in this rendering are approximations subject to limitations of the printing and PDF process.

© Royal Thai - All rights reserved worldwide.

Approved _____ Date _____

CROWNE PLAZA
DESIGN NAME: NX1045285-1.qtm
Project Number: SP182794
Repeat Size: 990px x 1370px
Repeats Shown: 1x1
Scale: 1:18
Quality: 7 / 7



- 1
GR06
Richard
8.85%
- 2
GR19
Miles
13.11%
- 3
GR18
Kim
1.91%
- 4
K323/17J
18.29%
- 5
K324/18J
3.17%
- 6
K325/19J
6.88%
- 9
47.77%

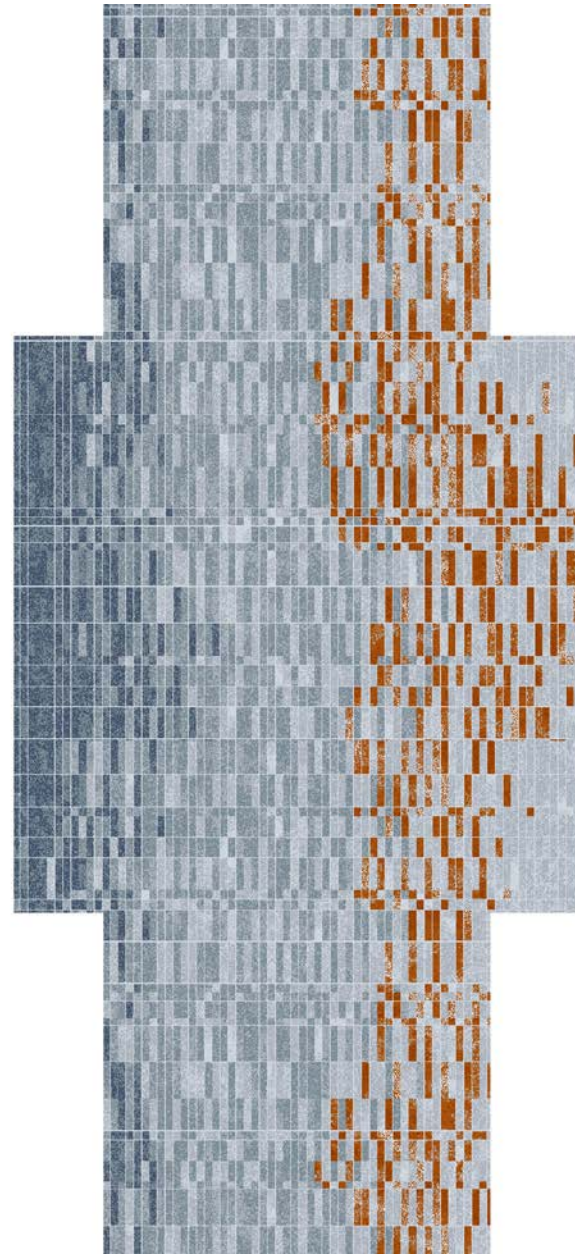
Please sign and return this design rendering indicating your approval of scale, design intent, design repeat details, and colour placement. The colors referenced in this rendering are approximations subject to limitations of the printing and PDF process.

© Royal Thai - All rights reserved worldwide.

Approved _____ Date _____

CROWNE PLAZA
DESIGN NAME: NH-045044-1.qtm
Project Number: SP182794
Repeat Size: 1008px x 1791px
Repeats Shown: 1x1
Scale: 1:18
Quality: 7 / 9

R
ROYAL THAI



1	2	3	4	6	7	8	10
K323/17J	GR04 Joan	GR19 Miles	GR06 Richard	GR13 Ross	G333/25G	G334/27G	TEMPLATE
3.08%	12.96%	17.74%	9.74%	3.04%	3.76%	1.54%	48.14%

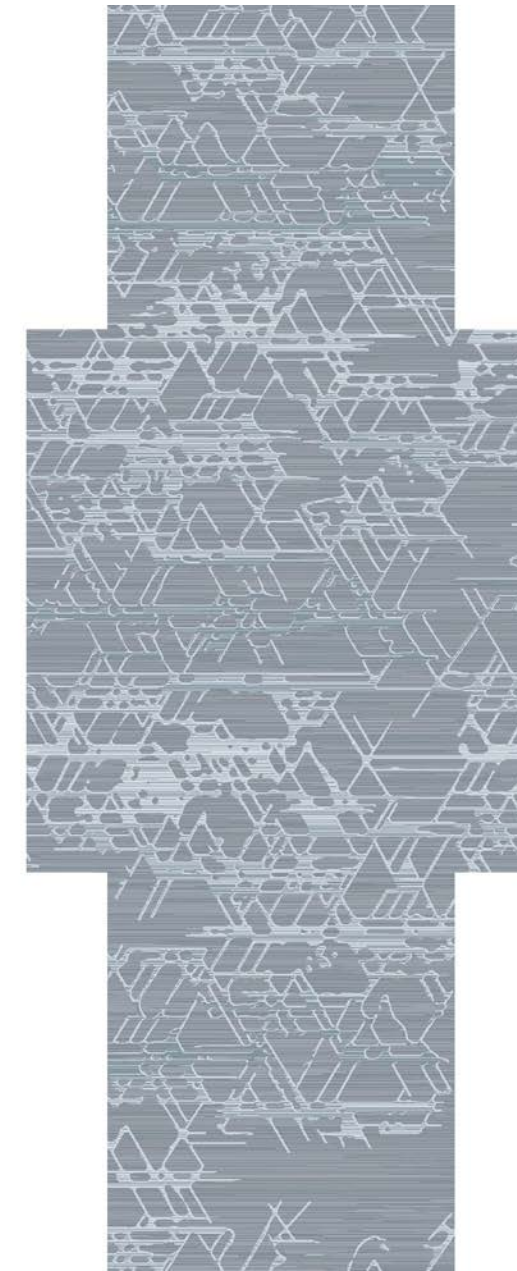
Please sign and return this design rendering indicating your approval of scale, design intent, design repeat details, and colour placement. The colors referenced in this rendering are approximations subject to limitations of the printing and PDF process.

© Royal Thai - All rights reserved worldwide.

Approved _____ Date _____

CROWNE PLAZA
DESIGN NAME: NX1045245-1.qtm
Project Number: SP182794
Repeat Size: 144" x 199"
Repeats Shown: 1x1
Scale: 1:18
Quality: 7 / 9

R
ROYAL THAI



1	2	3	4	5	6	7	10
GR04 Joan	GR05 Martin	GR18 Kim	GR19 Miles	GR06 Richard	GR20 Rowan	GR13 Ross	TEMPLATE
6.85%	5.49%	18.94%	9.21%	2.66%	5.15%	3.07%	48.63%

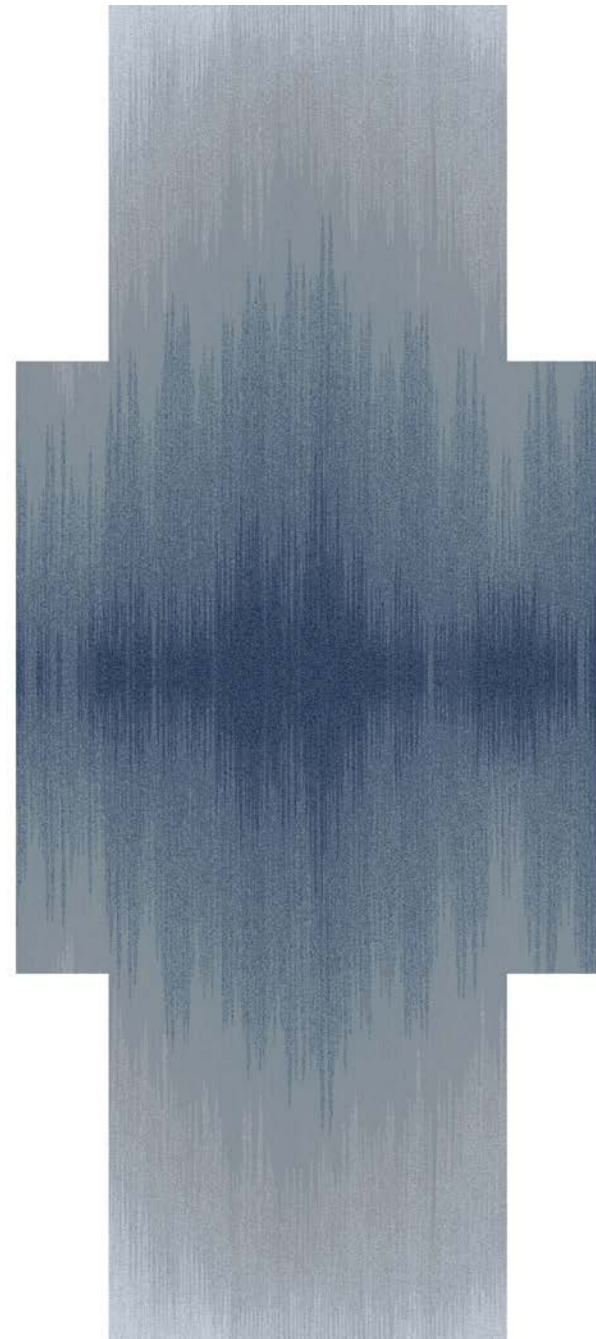
Please sign and return this design rendering indicating your approval of scale, design intent, design repeat details, and colour placement. The colors referenced in this rendering are approximations subject to limitations of the printing and PDF process.

© Royal Thai - All rights reserved worldwide.

Approved _____ Date _____

CROWNE PLAZA
DESIGN NAME: NX-044805-1.qtm
Project Number: SP182794
Repeat Size: 1004px x 2016px
Repeats Shown: 1x1
Scale: 1:20
Quality: 7 / 9

R
ROYAL THAI



1	2	3	4	5	6	7	8
K325/19J	K324/18J	K323/17J	GR04 Joan	GR18 Kim	GR19 Miles	GR06 Richard	
1.05%	1.05%	14.38%	15.62%	11.57%	7.14%	0.91%	48.28%

Please sign and return this design rendering indicating your approval of scale, design intent, design repeat details, and colour placement. The colors referenced in this rendering are approximations subject to limitations of the printing and PDF process.

© Royal Thai - All rights reserved worldwide.

Approved _____ Date _____

CROWNE PLAZA
DESIGN NAME: NX-BX05603-36.qtm
Project Number: SP182794
Repeat Size: 247.6" x 354.3"
Repeats Shown: 1x1
Scale: 1:30
Quality: 7 / 9

FLOOR PLAN NXBX05603-36



FLOOR PLAN NXI045285-1



Modern • Timeless • Textural

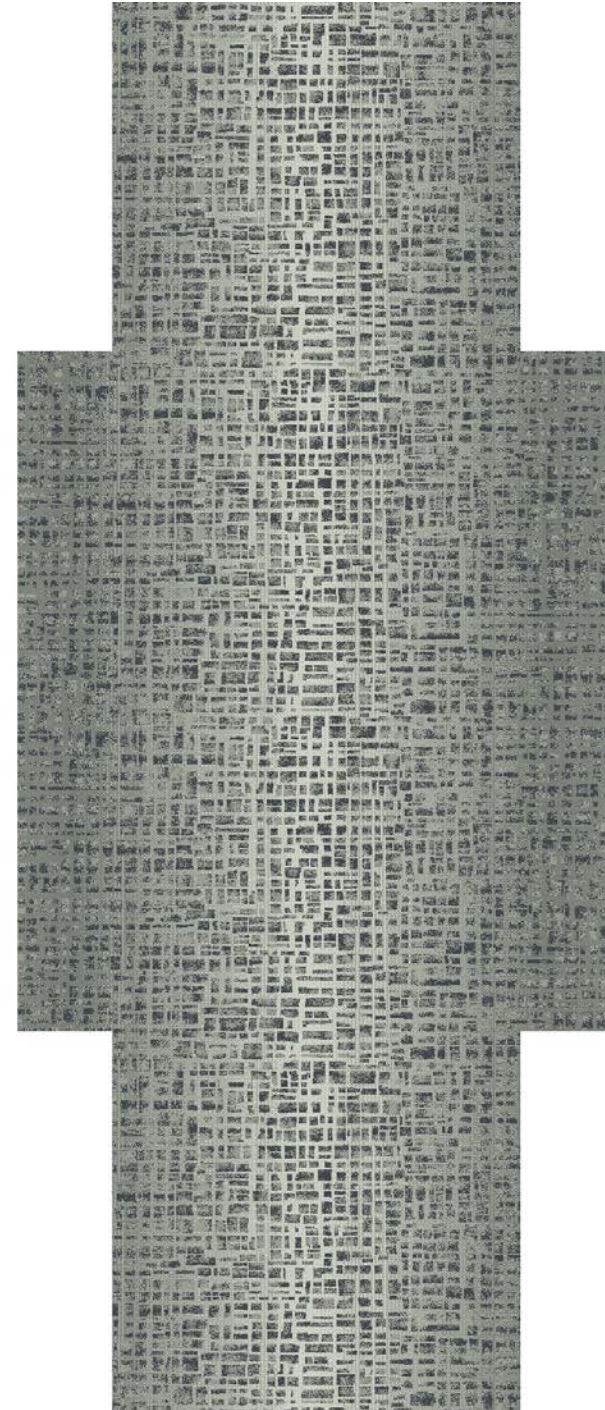




Please sign and return this design rendering indicating your approval of scale, design intent,
© Royal Thai - All rights reserved worldwide.

Approved _____ Date _____

CROWNE PLAZA
DESIGN NAME: NX048773P001.qtm
Project Number: 169356-01
Repeat Size: 142.4" x 192.9"
Repeats Shown: 1x1
Scale: 1:16
Quality: 7 / 9



Please sign and return this design rendering indicating your approval of scale, design intent,
© Royal Thai - All rights reserved worldwide.

Approved _____ Date _____

Collection: Revive
DESIGN NAME: NX048774P001.qtm
Project Number: 169356-01
Repeat Size: 144" x 212"
Repeats Shown: 1x1
Scale: 1:17
Quality: 7 / 9

FLOOR PLAN NX048773P001



AXMINSTER - PERFORMANCE AND SPECIFICATION

Specification

Quality	: AB30902436P		
Construction	: Woven Axminster		
Yarn Content	: 80% Wool / 20% Nylon		
Yarn Count	: R 660/2 Tex, 2/47s Dewsbury		
Pitch per Inch	: 7		
Rows per Inch	: 9		
Pile Height	: 6.4 mm	: 0.250 inch	
Pile Weight	: 1227 gm/sm	: 36.2 oz/sy	
Effective Pile Weight	: 908 gm/sm	: 26.8 oz/sy	
Total Weight	: 2136 gm/sm	: 63.0 oz/sy	
Total Thickness	: 9.0 mm	: 0.355 inch	
Backing Yarns	: Polyester/Polypropylene		

Performance Test and Treatment

Surface Flammability	ASTM D2859 / CPSC FF 1-70 Pill Test Pass
Radiant Panel Test	ASTM E648 Class 1
Smoke Density	ASTM E662 < 450
Indoor Air Quality	CRI Green Label Plus
Electrostatic Propensity	AATCC 134 < 3.5 KV
End Use Classification	BS EN 1307 Class 33 Heavy Commercial
Pile Treatment	Fully Mothproofed

LEED Credit Contribution

Material & Resources:

Building Product Disclosure and Optimization - Environmental Product Declarations	Option 2: Demonstrating Multi-attribute Optimization: NSF 140 Gold Certified
Building Product Disclosure and Optimization - Sourcing of Raw Materials	Option 2: Bio-based Materials, ASTM D6866
Building Product Disclosure and Optimization - Material Ingredients	Option 1: Health Product Declaration Option 2: Contains No Ingredients Listed On The REACH Authorization or Candidate List

Indoor Environmental Quality:

Low Emitting Materials	CRI Green Label Plus Certified
------------------------	--------------------------------

International Standards



We apply strict quality control at all stages of production, in compliance with ISO 9001. However, the carpet manufacturing process is a complex series of operations and variations in the specifications could occur. This will not have any detrimental effect on the performance of the product. We reserve the right to amend this specification without prior notice.



**PROJECT
SPOTLIGHT**

Crowne Plaza Ravinia

Atlanta, Georgia



**SELECTED
EXPERIENCE
UNITED STATES**

Crowne Plaza Houston

Crowne Plaza Northbrook

Crowne Plaza Warwick

Crowne Plaza Toronto Airport

Crowne Plaza Ravinia

Crowne Plaza North Charleston

Crowne Plaza Dallas

Crowne Plaza Englewood

Crowne Plaza Riverfront St. Paul

Crown Plaza LAX

