



**ROYAL
THAI**

AXPEDITE

OCHRE

AXPEDITE:

OCHRE

Illustrated across a variety of Axminster designs recolored using four different pre-creed palettes, our Axpedito Color Studies are an ongoing experiment mixing color application + manufacturing efficiency that delivers a fresh perspective on ready to order Axminster carpet.

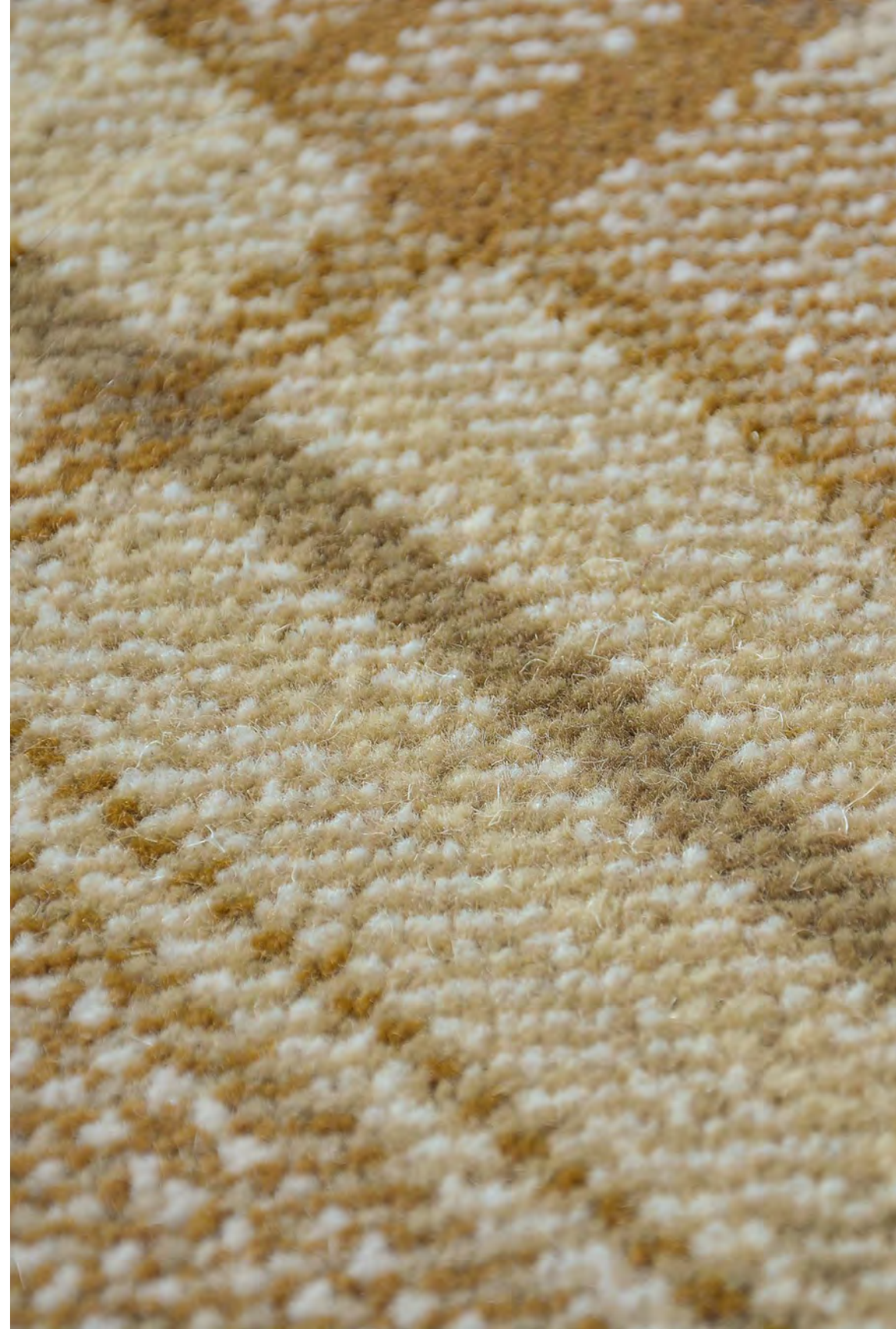
Throughout the color studies are geometric repeating designs, textural layers and complementary coordinates all working together and able for specification within four different row counts.

Available in our standard 80% wool, 20% nylon yarn blend, these semi-customizable Axminster patterns are ready to weave on 4-meter-wide looms in our vertically integrated facility in Thailand.

HOW TO ORDER:

1. Pick your palette – cobalt, carmine, ochre, or viridian
2. Recolor your desired patterns
3. Select your specification per area of use
4. Place your order with your local Royal Thai representative

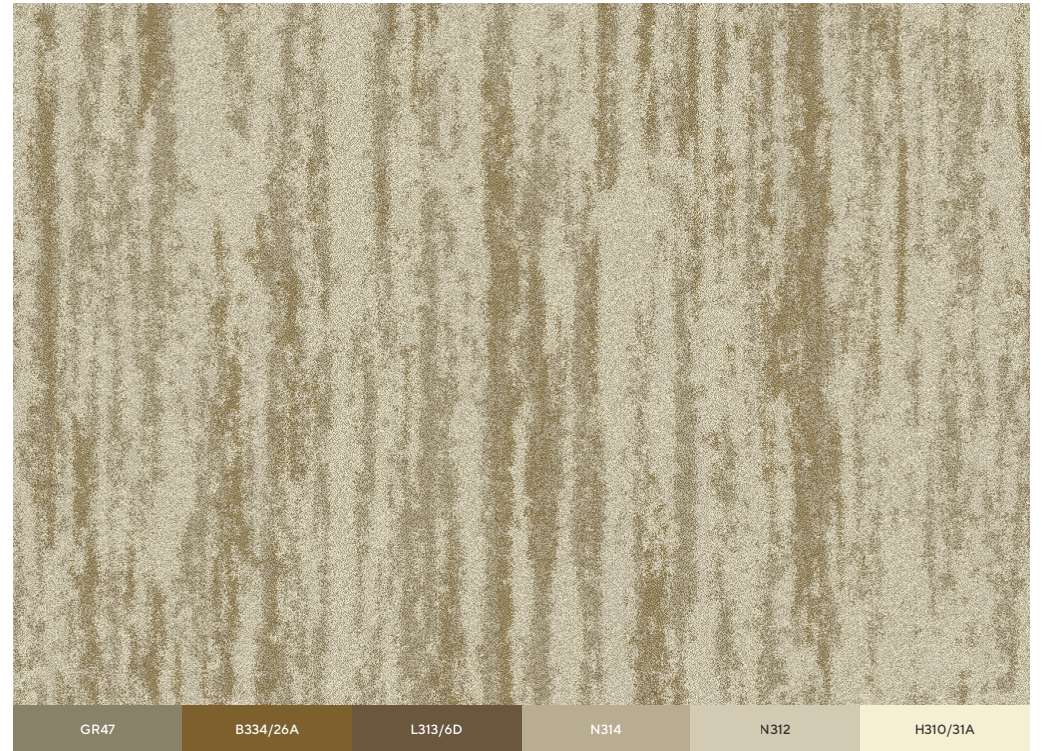
F316	G314	F314	GR47	N312	A332/22B
GR44	B334/26A	C333/26B	L313/6D	N314	H310/31A





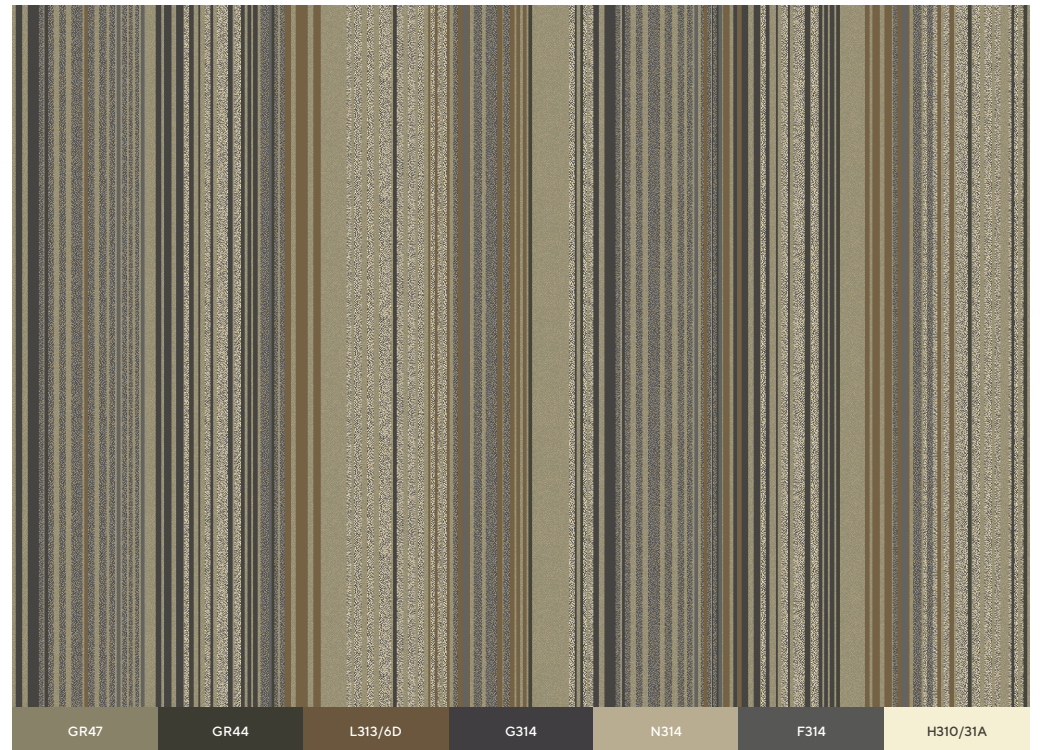
F316 L313/6D N314 A332/22B N312 H310/31A

Design: GX065389P002
Repeat Size: 157" x 150" | 4ivm x 3.8m



GR47 B334/26A L313/6D N314 N312 H310/31A

Design: FX065391P001
Repeat Size: 157" x 150" | 4m x 3.8m



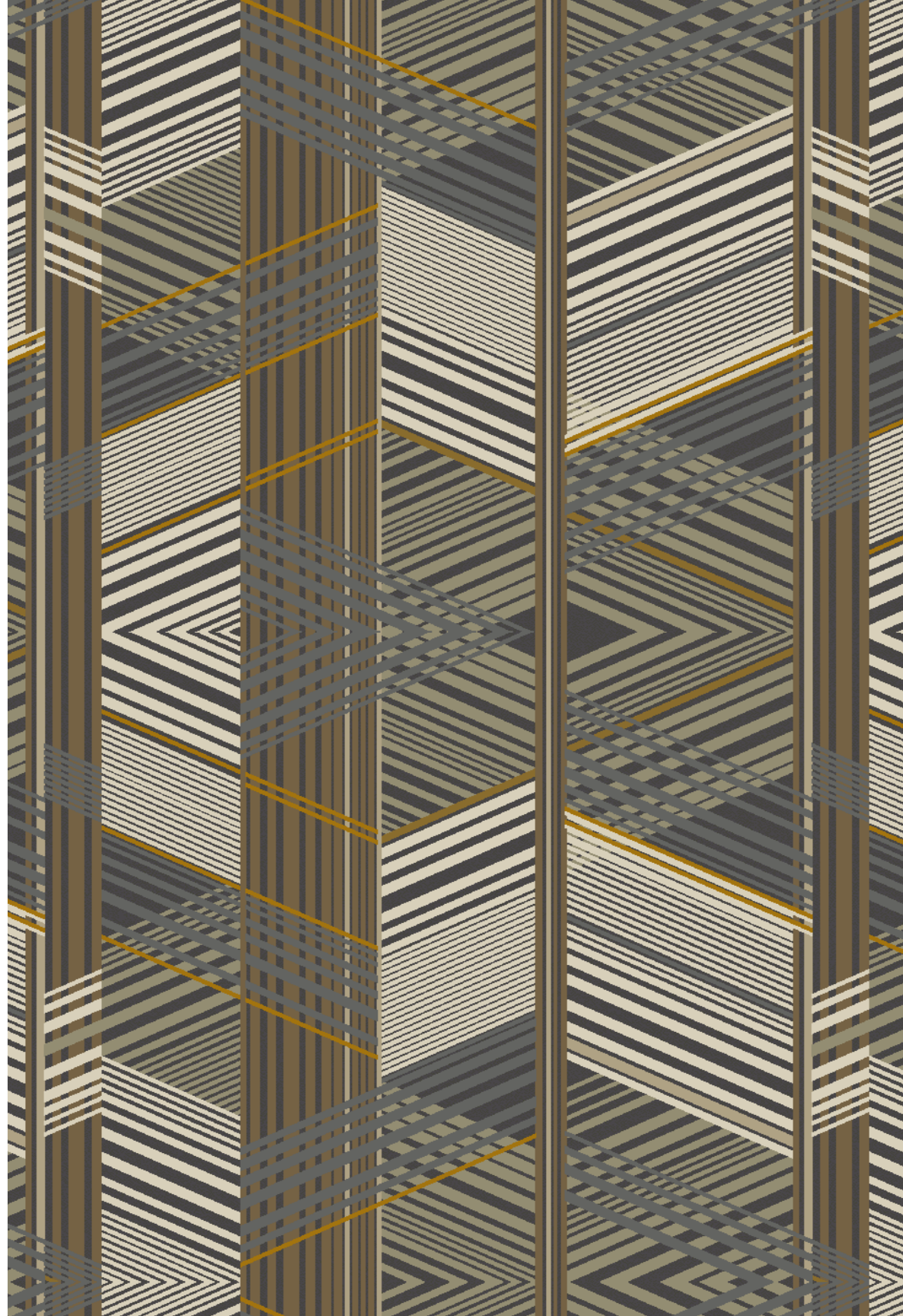
GR47 GR44 L313/6D G314 N314 F314 H310/31A

Design: GX065390P003
Repeat Size: 157" x 150" | 4m x 3.8m

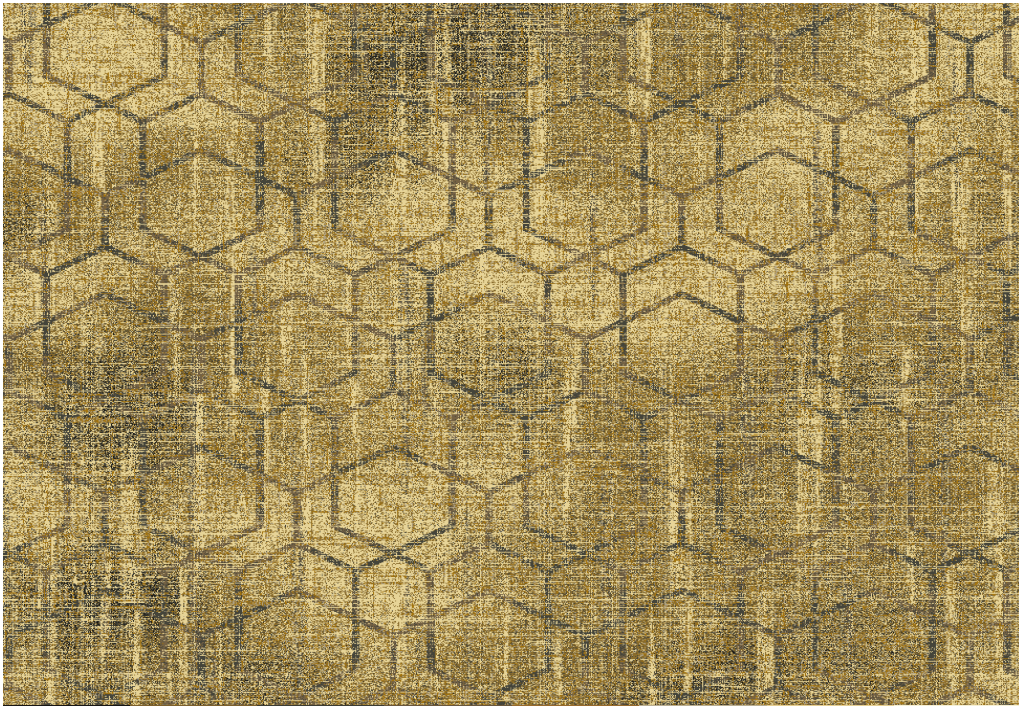


GR47	B334/26A	GR44	L313/6D	C333/26B
G314	N314	F314	N312	

Design: GX065388P003
Repeat Size: 157" x 150" | 4m x 3.8m



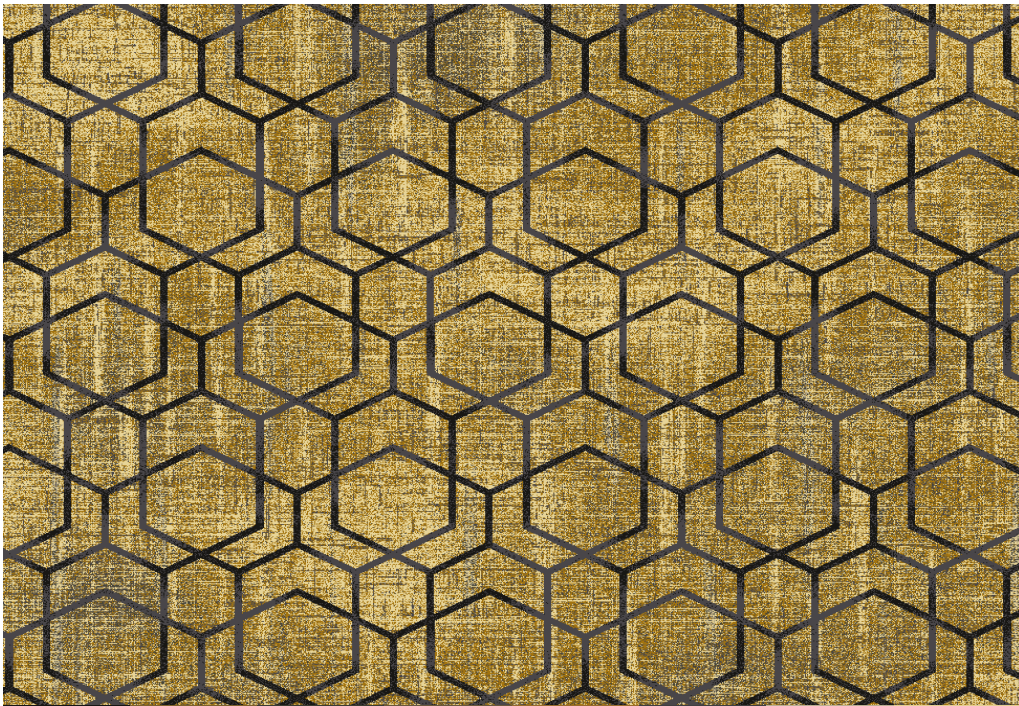




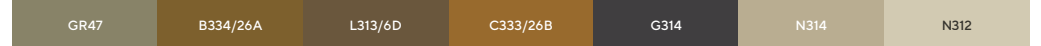
Design: GX065413P001
Repeat Size: 157" x 118" | 4m x 3m



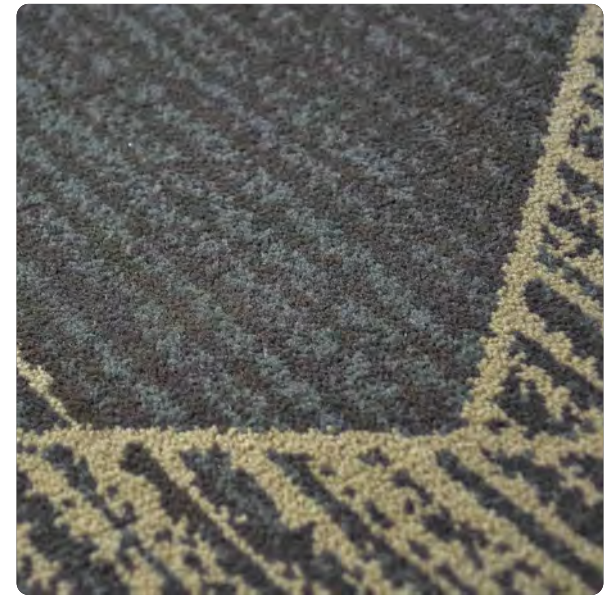
Design: FX065415P003
Repeat Size: 157" x 118" | 4m x 3m



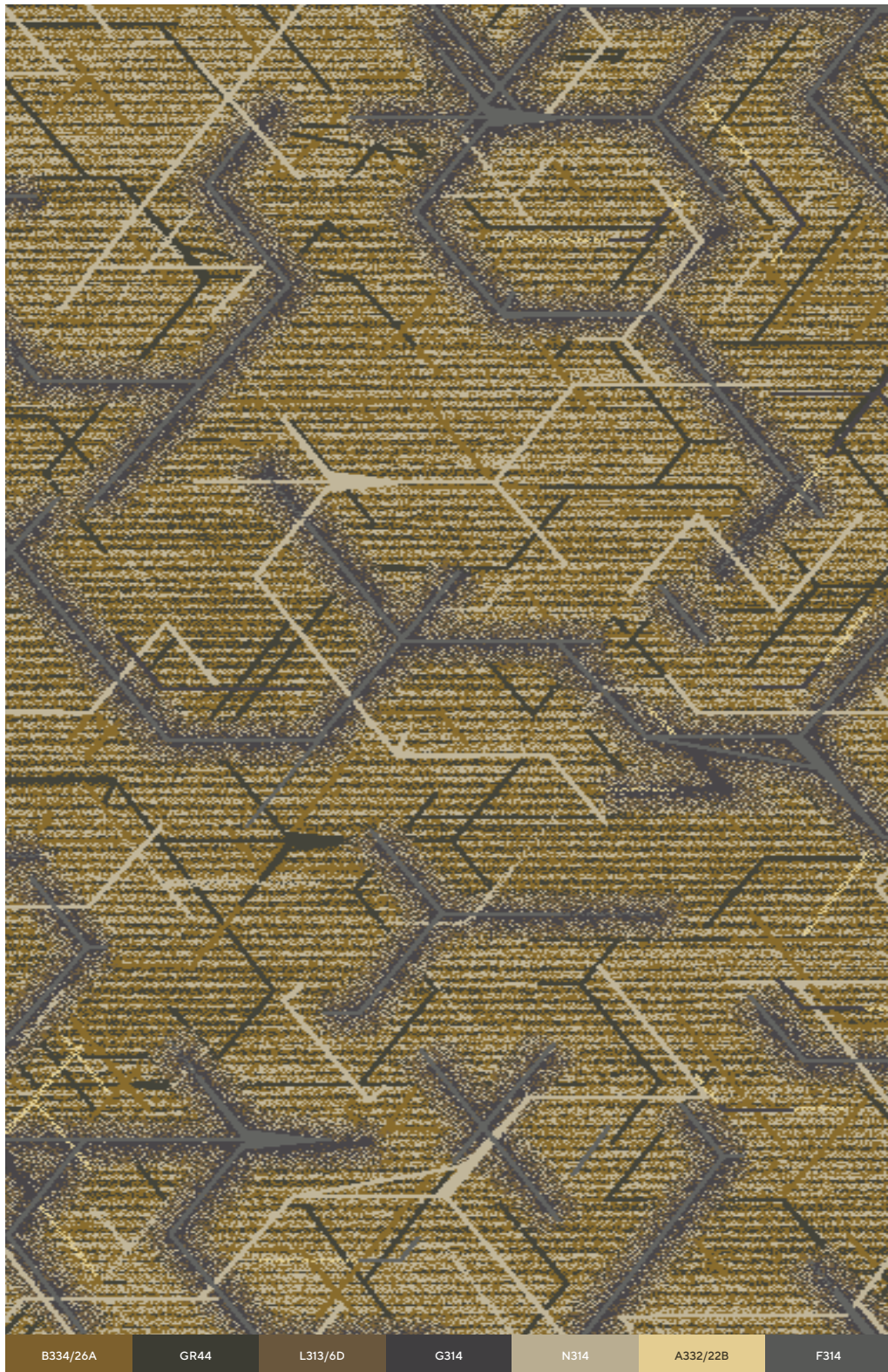
Design: GX065412P001
Repeat Size: 157" x 118" | 4m x 3m



Design: FX065414P001
Repeat Size: 157" x 118" | 4m x 3m



Design: GX065394P003
Repeat Size: 157" x 78" | 4m x 2m



Design: GX065392P002
Repeat Size: 157" x 78" | 4m x 2m

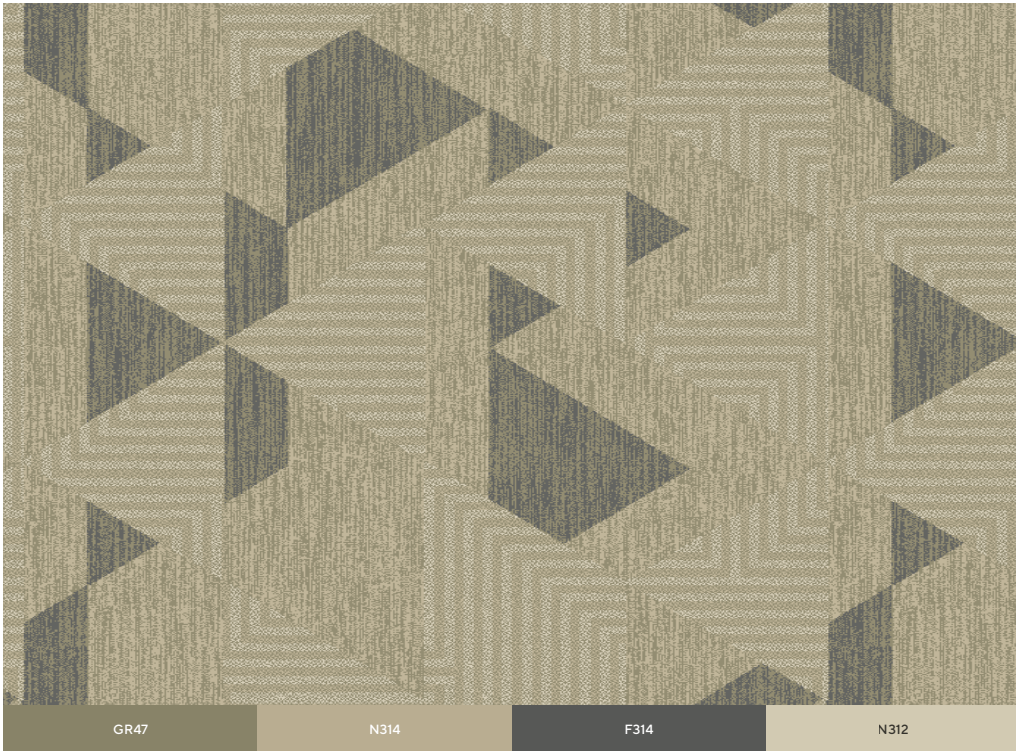


Design: BX065395P001
Repeat Size: 157" x 78" | 4m x 2m



Design: GX065393P001
Repeat Size: 157" x 78" | 4m x 2m





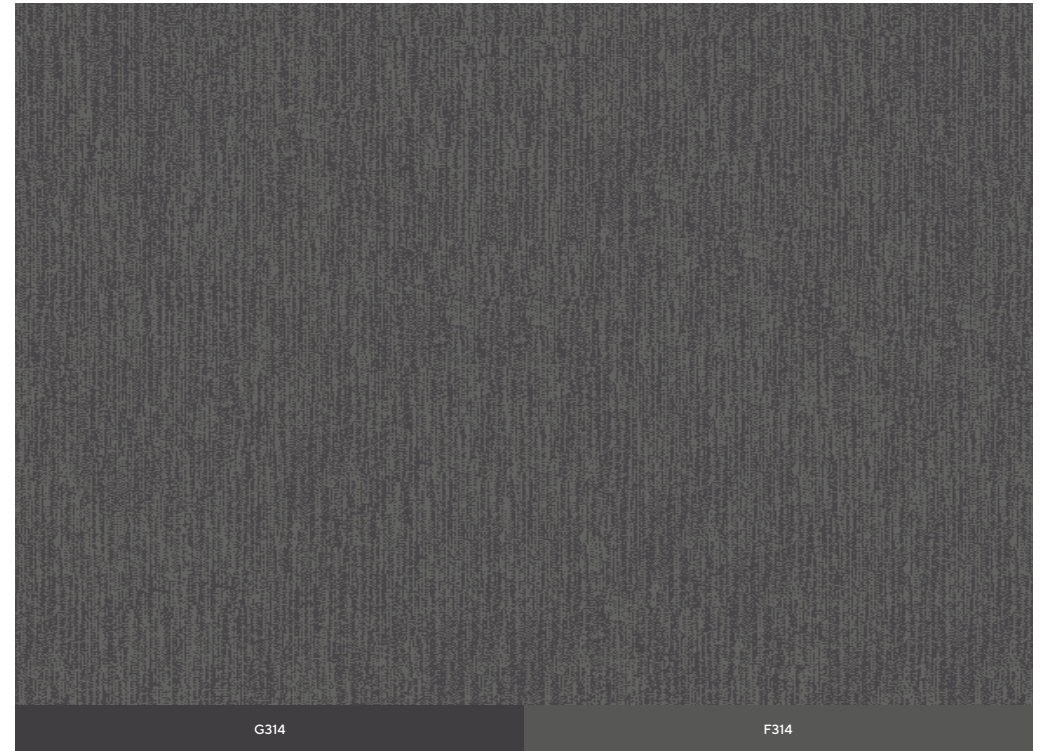
GR47

N314

F314

N312

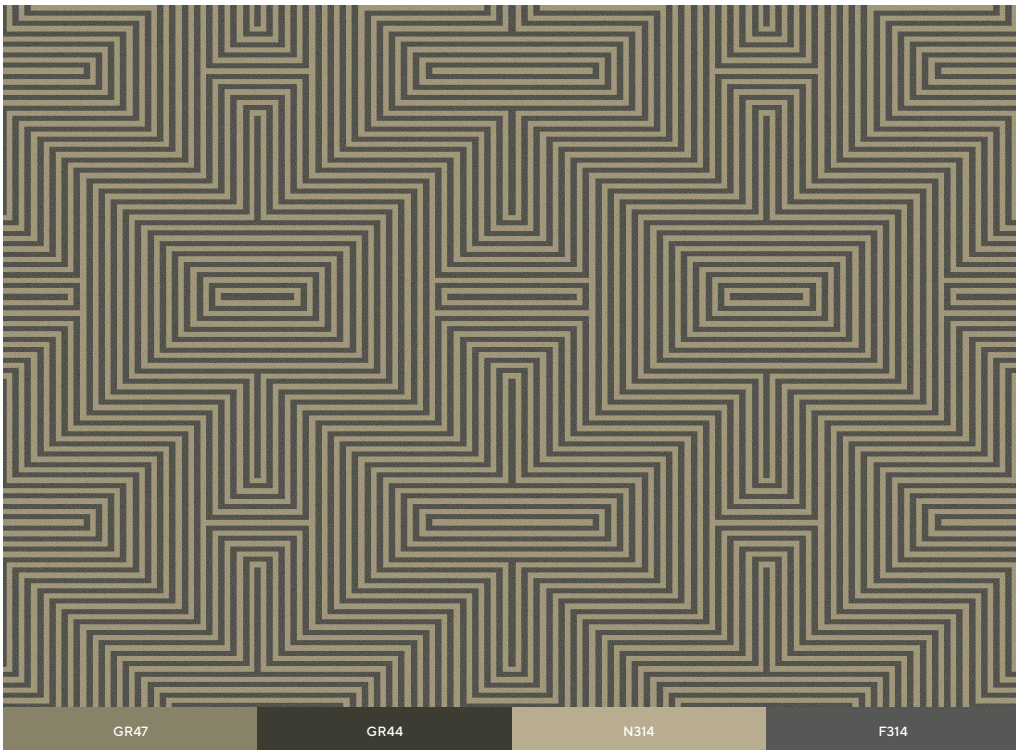
Design: GX065410P003
Repeat Size: 157" x 67" | 4m x 1.7m



G314

F314

Design: BX065411P003
Repeat Size: 157" x 67" | 4m x 1.7m



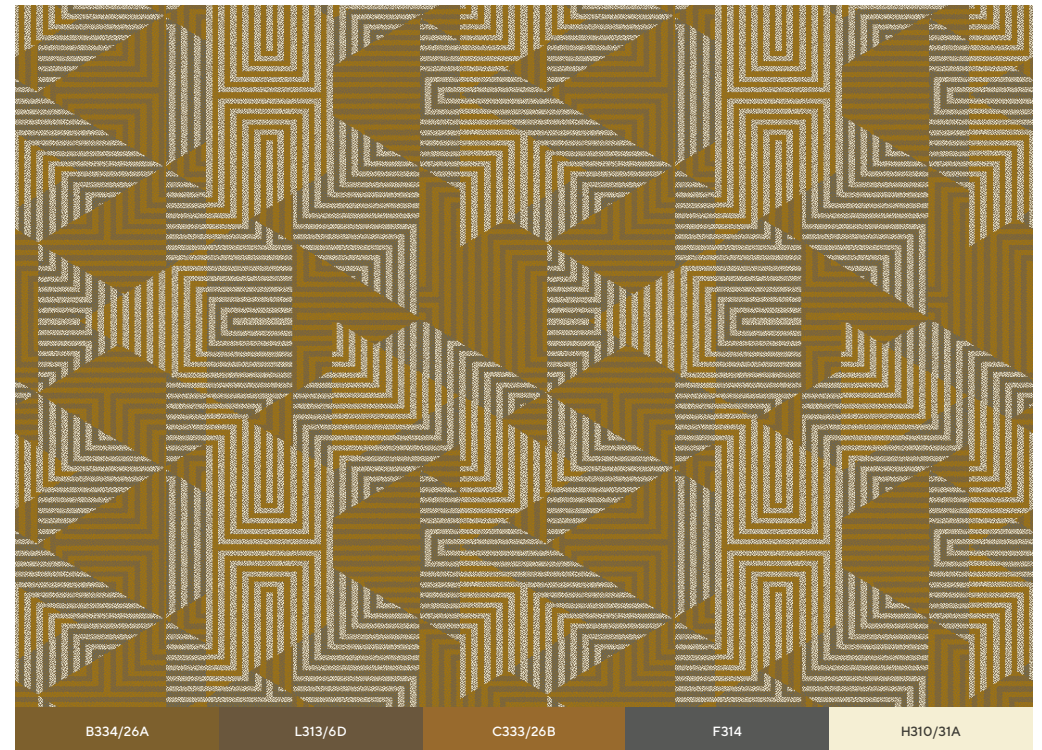
GR47

GR44

N314

F314

Design: GX065408P003
Repeat Size: 157" x 67" | 4m x 1.7m



B334/26A

L313/6D

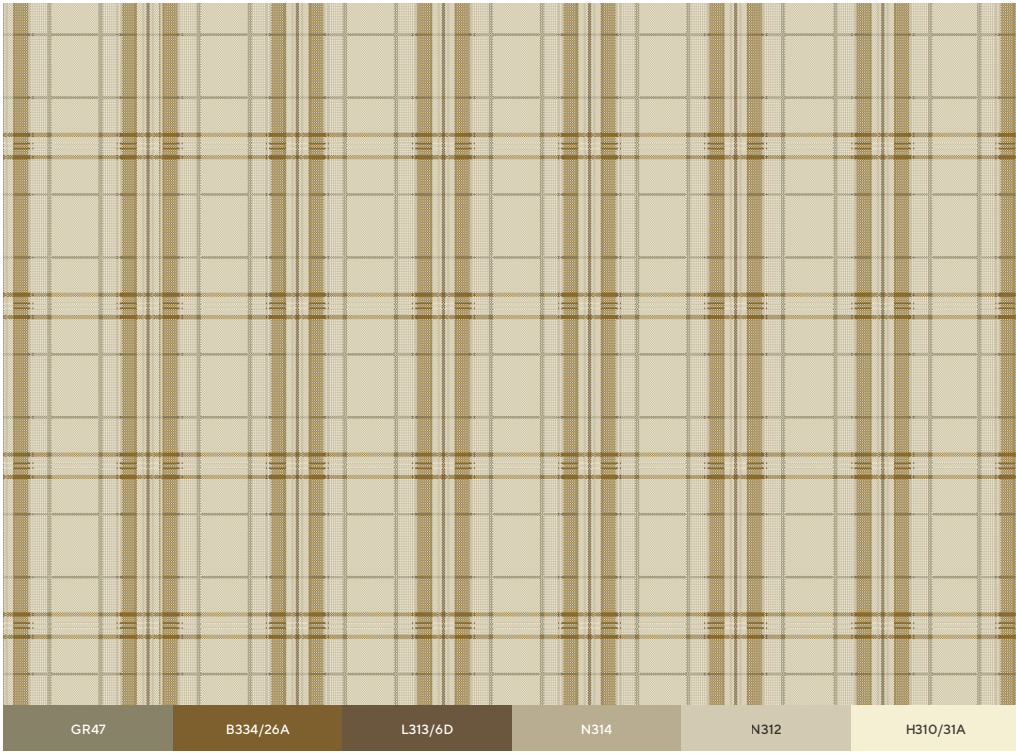
C333/26B

F314

H310/31A

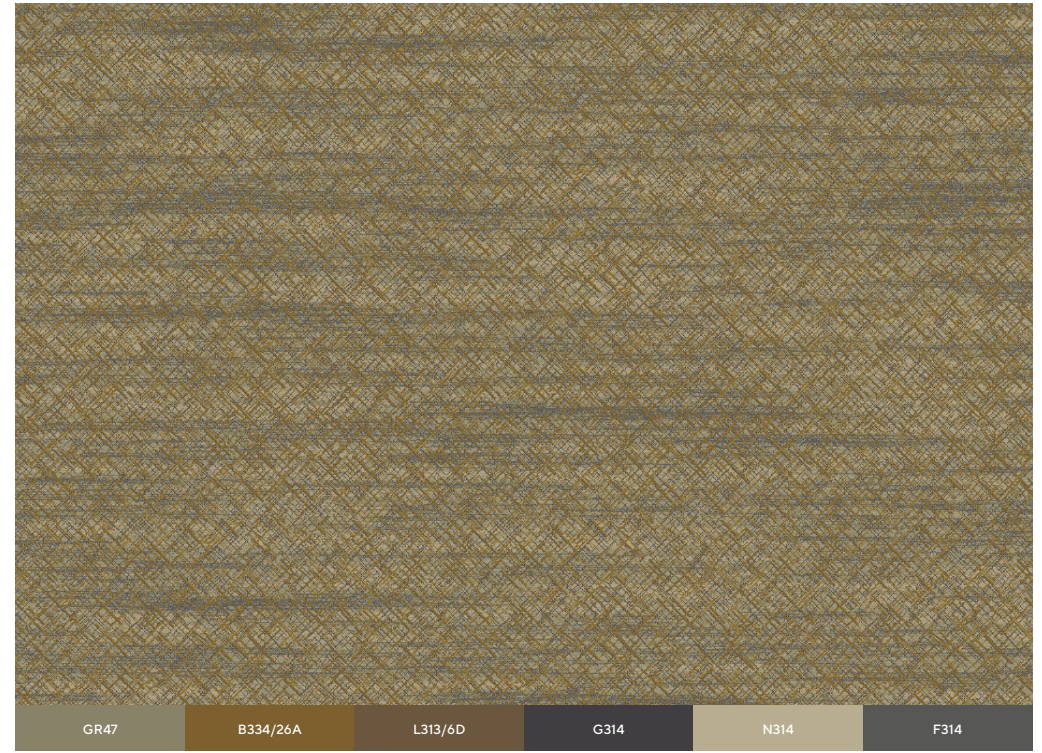
Design: GX065409P001
Repeat Size: 157" x 67" | 4m x 1.7m





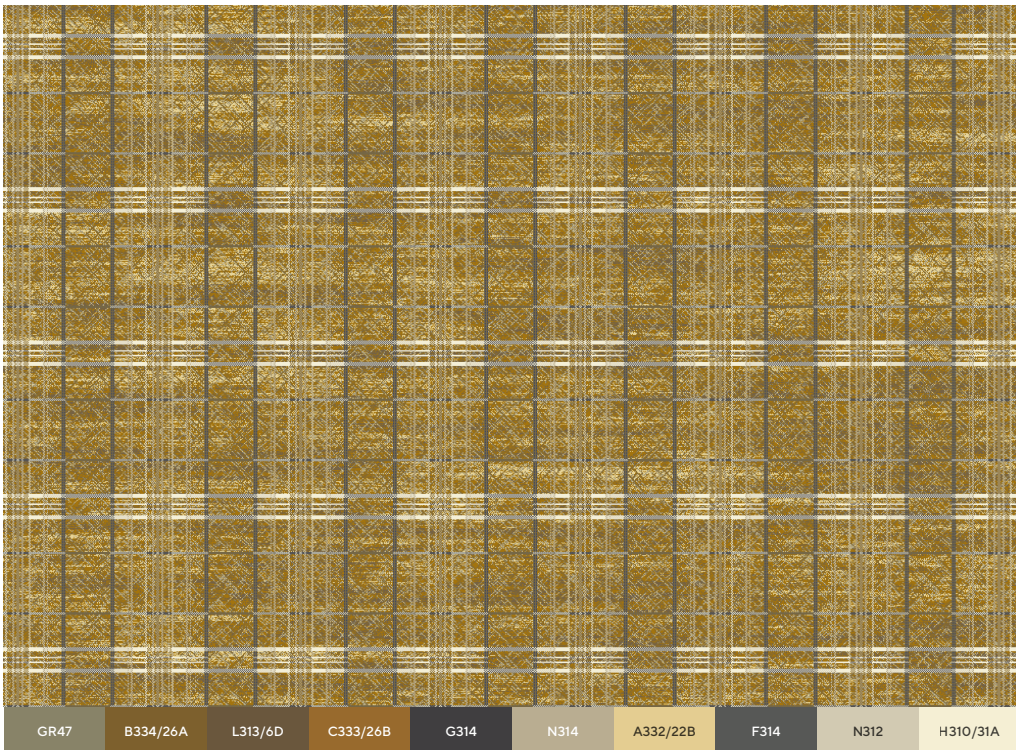
GR47 B334/26A L313/6D N314 N312 H310/31A

Design: FX065400P003
Repeat Size: 157" x 157" | 4m x 4m



GR47 B334/26A L313/6D G314 N314 F314

Design: FX065402P003
Repeat Size: 157" x 157" | 4m x 4m



GR47 B334/26A L313/6D C333/26B G314 N314 A332/22B F314 N312 H310/31A

Design: FX065401P003
Repeat Size: 157" x 157" | 4m x 4m

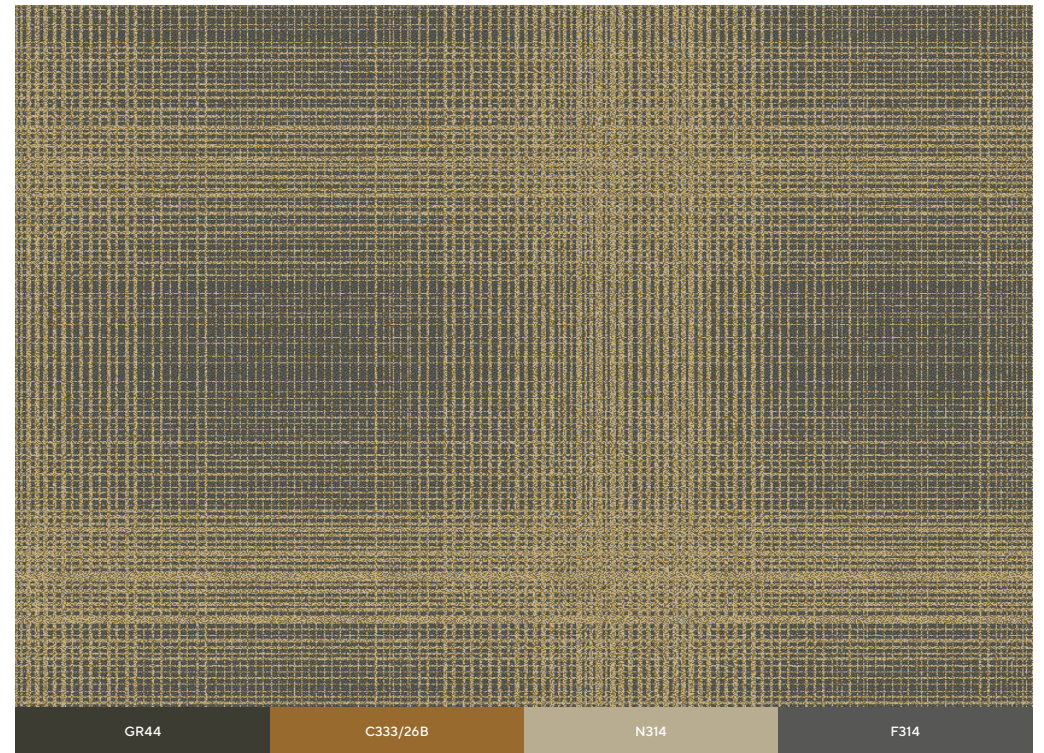


C333/26B N314 A332/22B

Design: FX065403P002
Repeat Size: 157" x 157" | 4m x 4m



Design: GX065396P001
Repeat Size: 157" x 98" | 4m x 2.5m



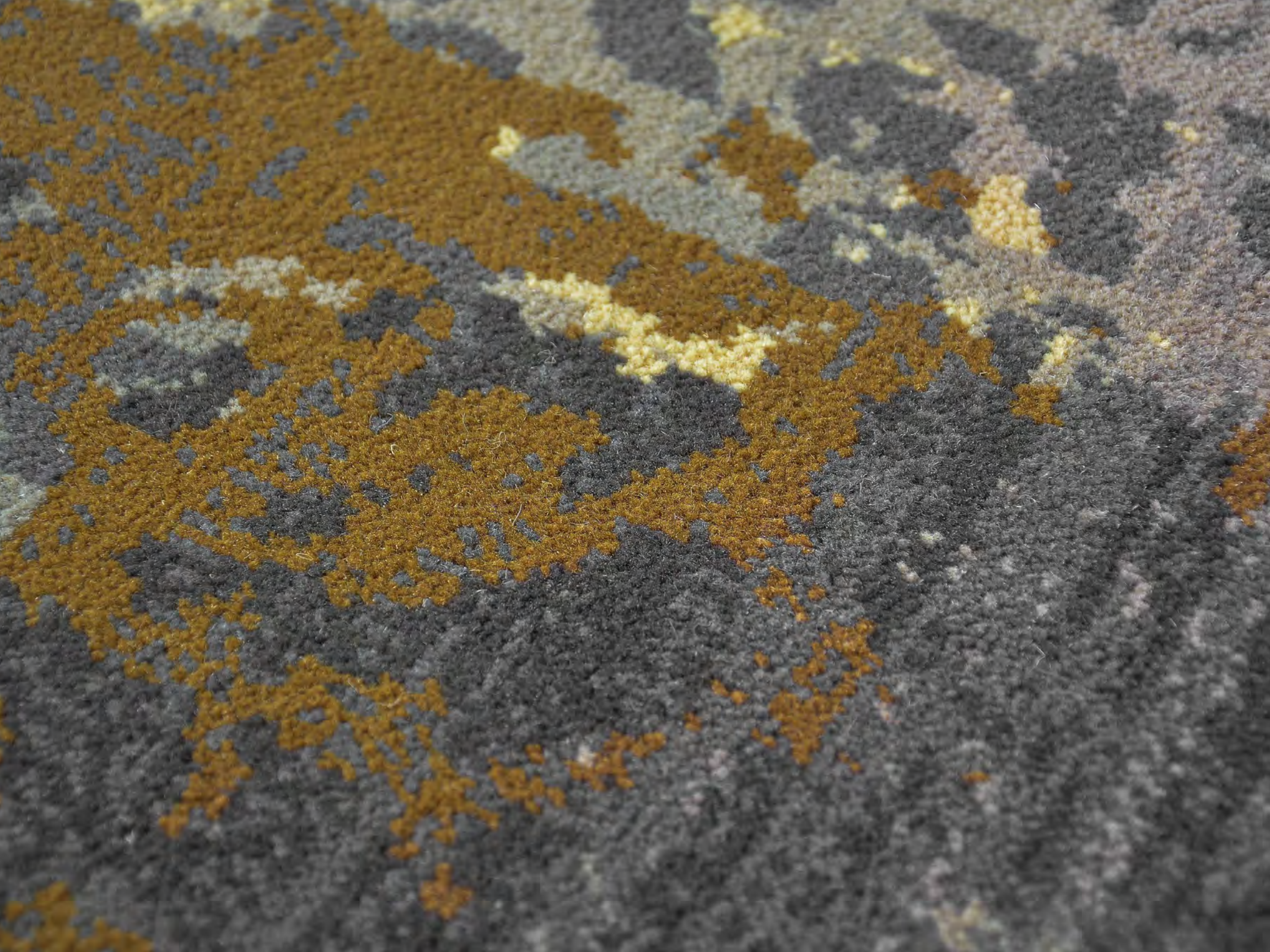
Design: GX065397P003
Repeat Size: 157" x 98" | 4m x 2.5m

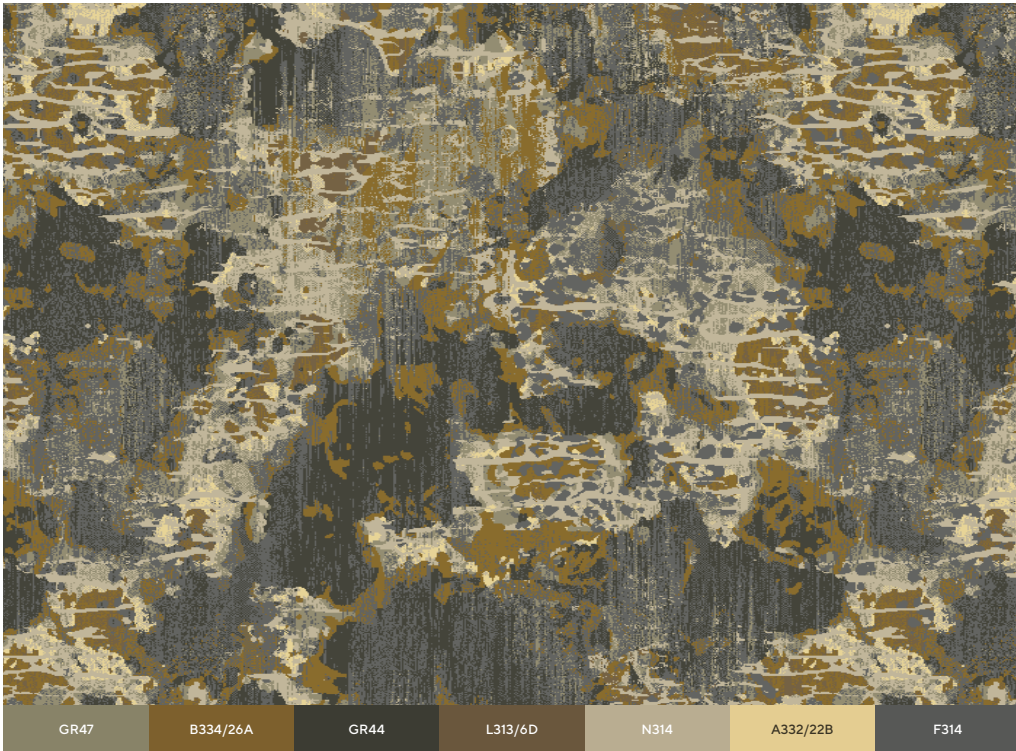


Design: GX065398P003
Repeat Size: 157" x 98" | 4m x 2.5m



Design: GX065399P002
Repeat Size: 157" x 98" | 4m x 2.5m

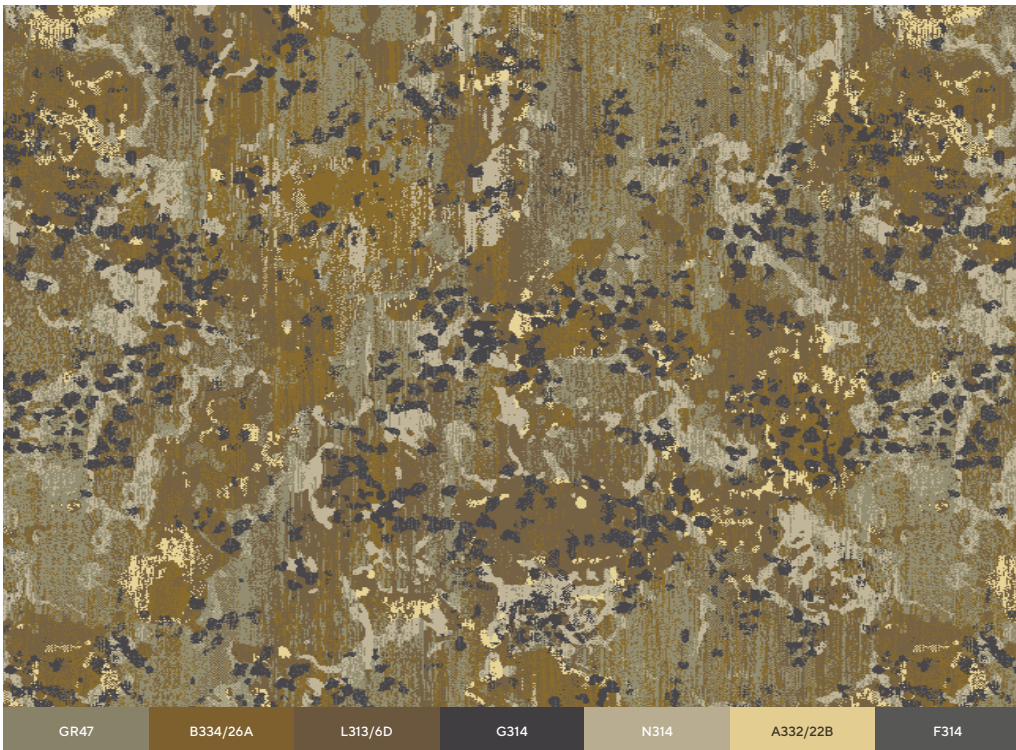




Design: FX065404P003
Repeat Size: 157" x 71" | 4m x 1.8m



Design: FX065406P002
Repeat Size: 157" x 71" | 4m x 1.8m



Design: FX065405P001
Repeat Size: 157" x 71" | 4m x 1.8m

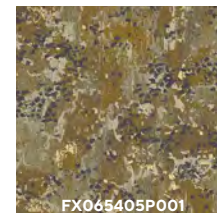
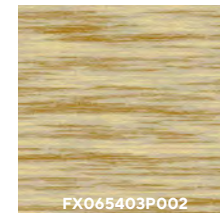
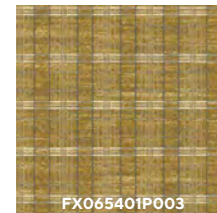
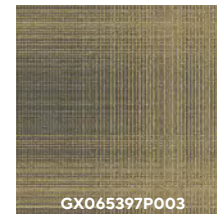
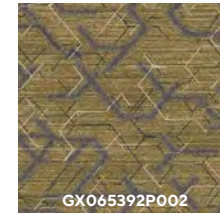
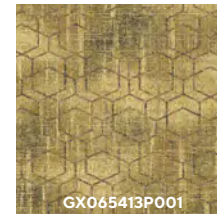
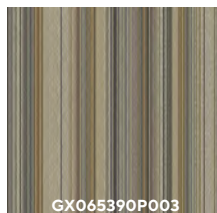
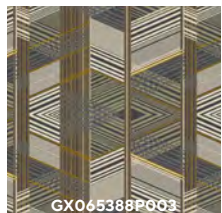


Design: FX065407P002
Repeat Size: 157" x 71" | 4m x 1.8m

SPECIFICATIONS:

	7 ROW	8 ROW	9 ROW	10 ROW
CONSTRUCTION	Woven Axminster	Woven Axminster	Woven Axminster	Woven Axminster
YARN CONTENT	80% WOOL, 20% NYLON	80% WOOL, 20% NYLON	80% WOOL, 20% NYLON	80% WOOL, 20% NYLON
PITCH	7	7	7	7
ROWS	7	8	9	10
PILE HEIGHT	6.4mm 0.250in	6.4mm 0.250in	6.4mm 0.250in	6.4mm 0.250in
PILE WEIGHT	954 gm/sm 28.1oz/sy	1091 gm/sm 32.3oz/sy	1227 gm/sm 36.2oz/sy	1363 gm/sm 40.2oz/sy
EFFECTIVE PILE WEIGHT	706 gm/sm 20.8oz/sy	807 gm/sm 23.8 oz/sy	908 gm/sm 26.8 oz/sy	1009 gm/sm 29.8 oz/sy
TOTAL WEIGHT	1947 gm/sm 57.4 oz/sy	2054 gm/sm 60.6 oz/sy	2136 gm/sm 63.0 oz/sy	2321 gm/sm 68.4 oz/sy
TOTAL THICKNESS	9.0mm 0.355in	9.0mm 0.355in	9.0mm 0.355in	9.0mm 0.355in
BACKING YARNS	Polyester/ Polypropylene	Polyester/ Polypropylene	Polyester/ Polypropylene	Polyester/ Polypropylene

DESIGN INDEX:





AMERICAS

+1 800 433 2440
calhoun@royalthai.com

THAILAND

+66 2314 5402
bangkok@royalthai.com

MIDDLE EAST

+971 4 451 7659
dubai@royalthai.com

UK

+44 7741 261203
unitedkingdom@royalthai.com

INDIA

+91 124 469 3900
india@royalthai.com

SINGAPORE

+65 6235 2477
singapore@royalthai.com

HONG KONG

+852 2359 8900
hongkong@royalthai.com

MACAU

+852 2359 8900
macau@royalthai.com

CHINA

+86 136 0030 8308
china@royalthai.com

ROYALTHAI.COM