




R

ROYAL
THAI



AXPEDITE

COBALT

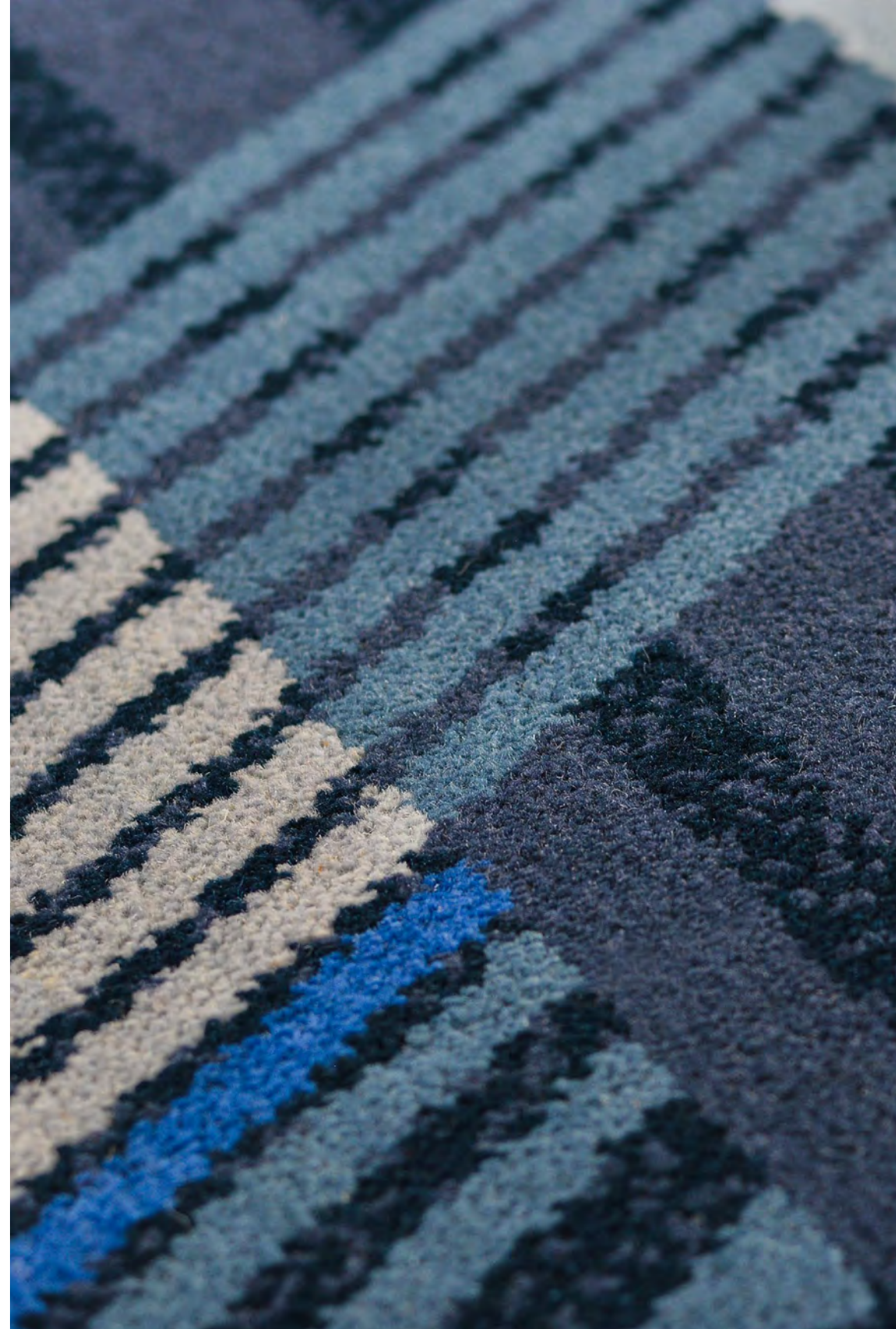
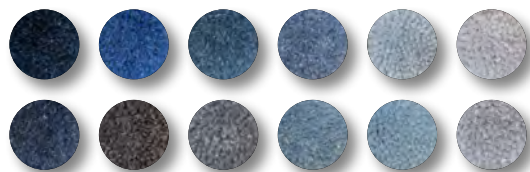
AXPEDITE COLOR STUDY : COBALT

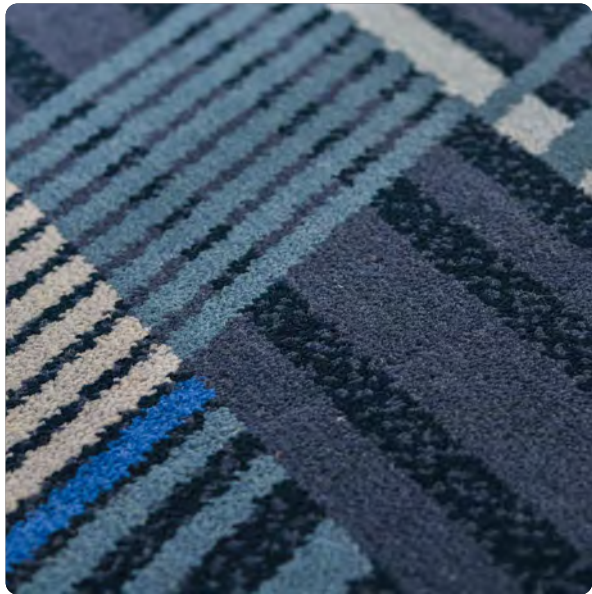
Illustrated across a variety of Axminster designs recolored using four different pre-created palettes, our AXpedite Color Studies are an ongoing experiment mixing color application + manufacturing efficiency that delivers a fresh perspective on ready to order Axminster carpet.

Kicking off our AXpedite Color Study Series, is a sophisticated color palette built using variations of blue punctuated with versatile cool grays, called *Cobalt*.

The patterns are built to work with one another. Throughout the color studies are geometric repeating designs, textural layers and complementary coordinates all working together and able for specification within four different row counts.

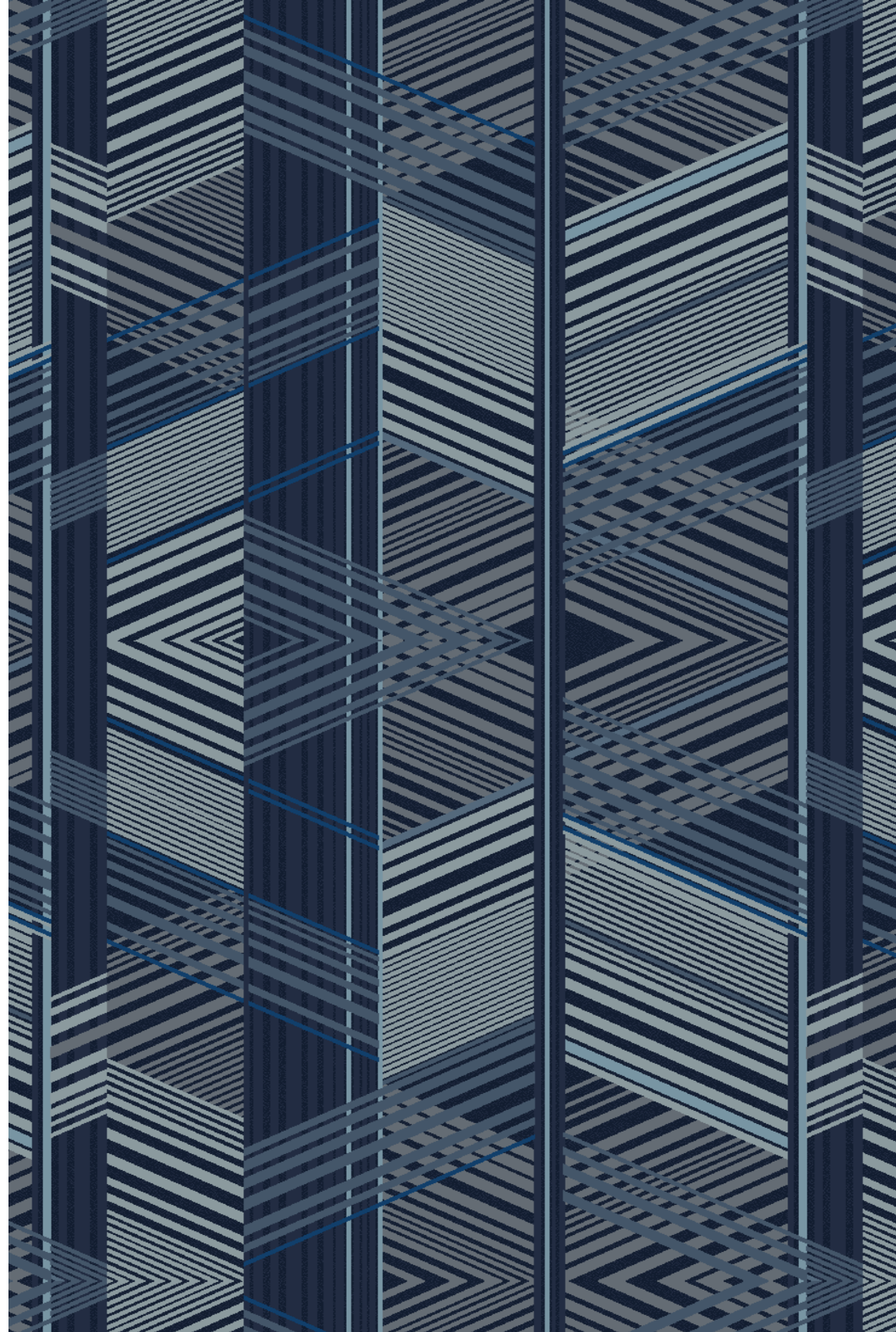
Available in our standard 80% wool, 20% nylon yarn blend, these semi-customizable Axminster patterns are ready to weave on 4-meter-wide looms in our vertically integrated facility in Thailand.

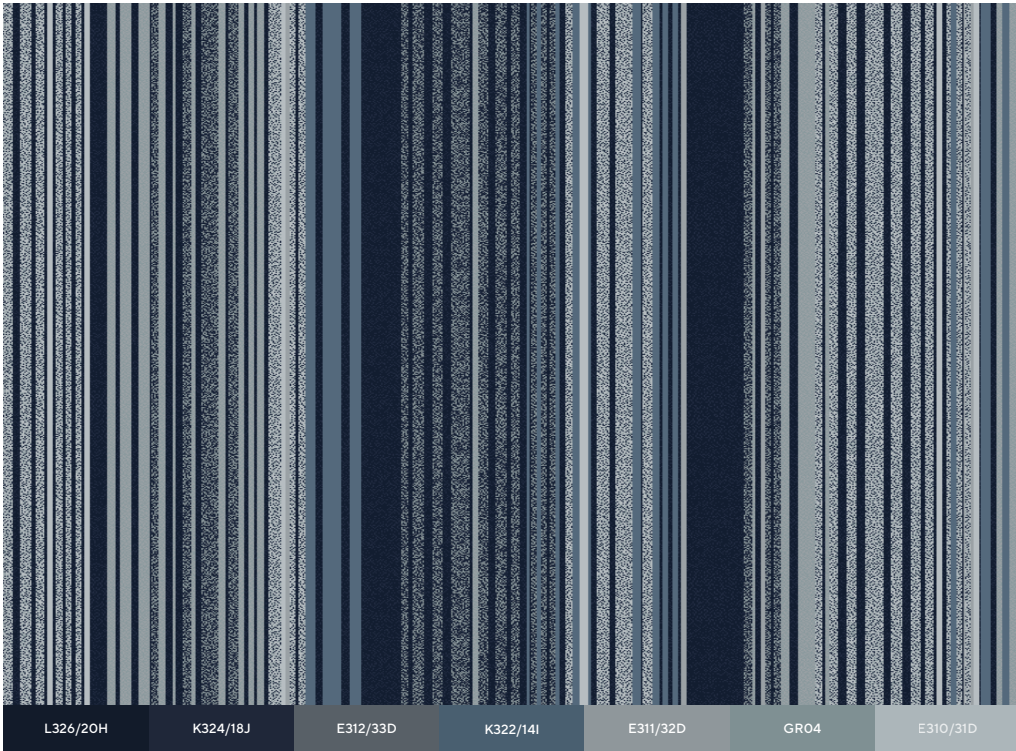




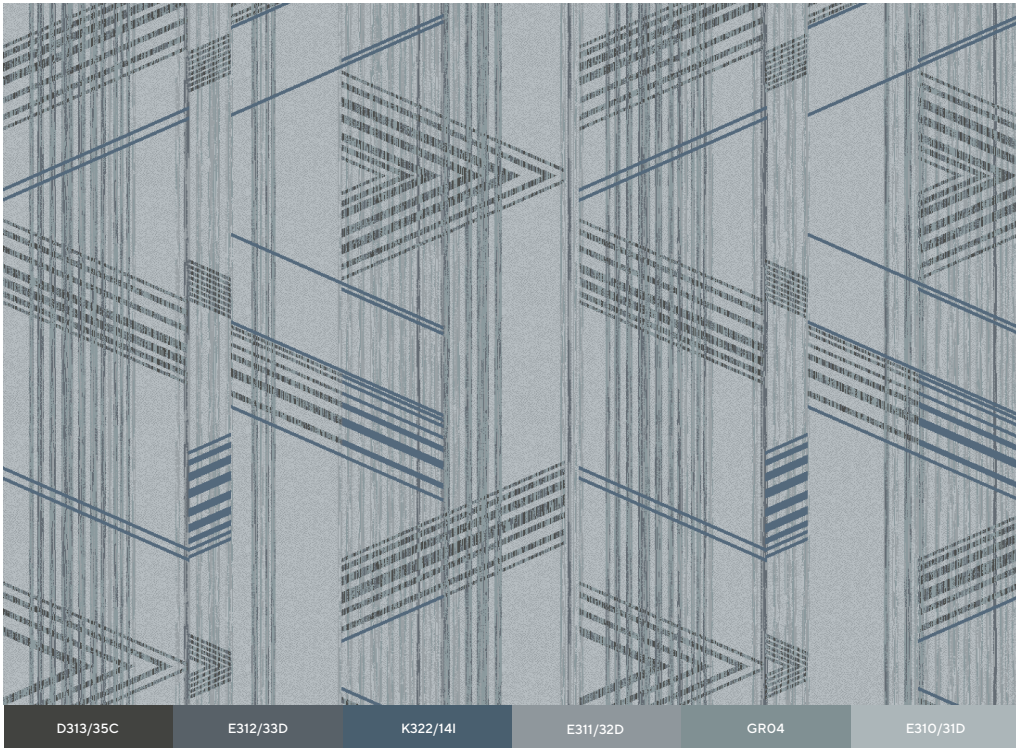
J324	L326/20H	L323/16I	K324/18J	E312/33D
K322/14I	L321	GR04		

Design: GX065320P002
Repeat Size: 157" x 150" | 4m x 3.8m

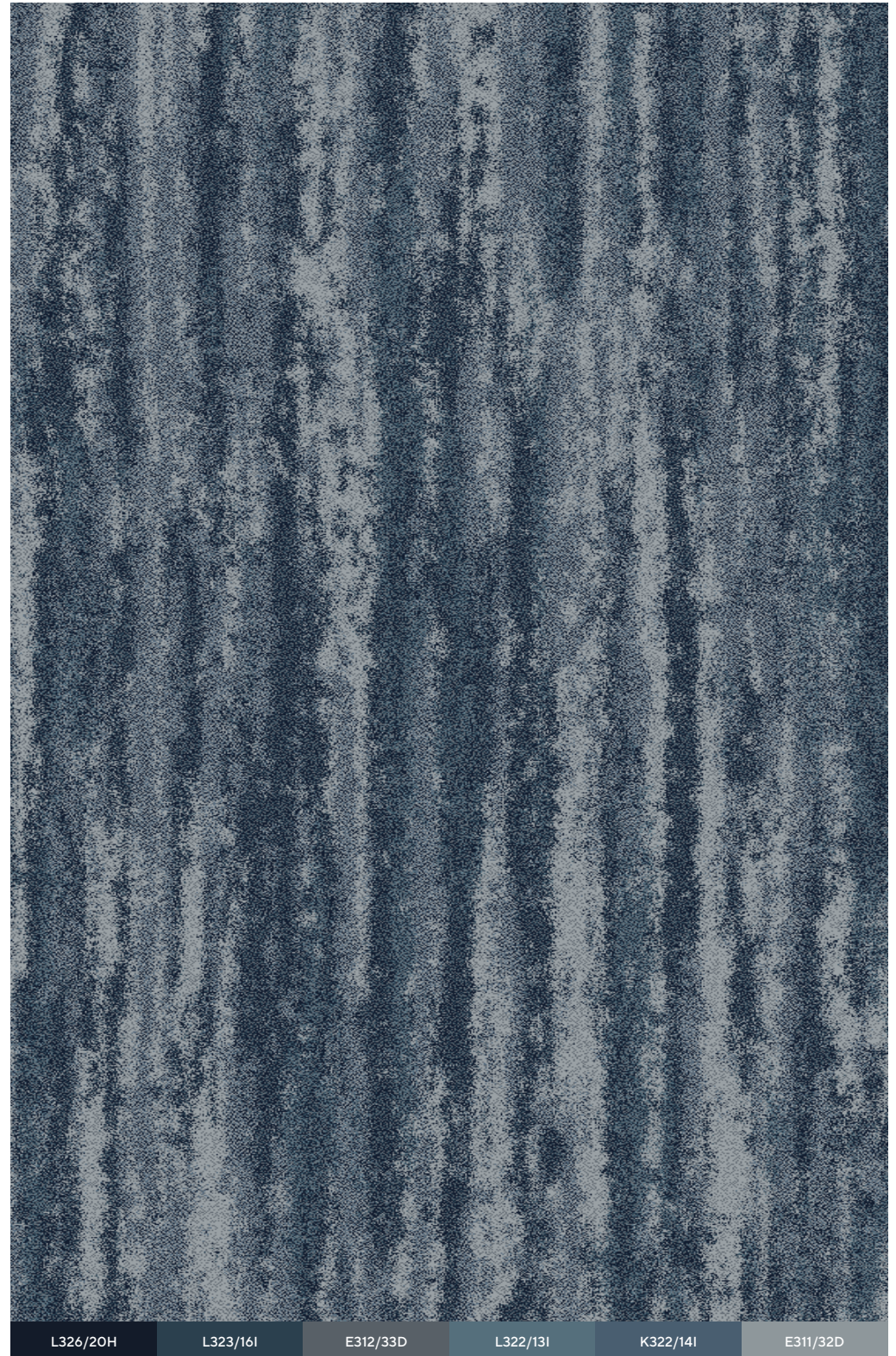




Design: GX065322P003
Repeat Size: 157" x 150" | 4m x 3.8m

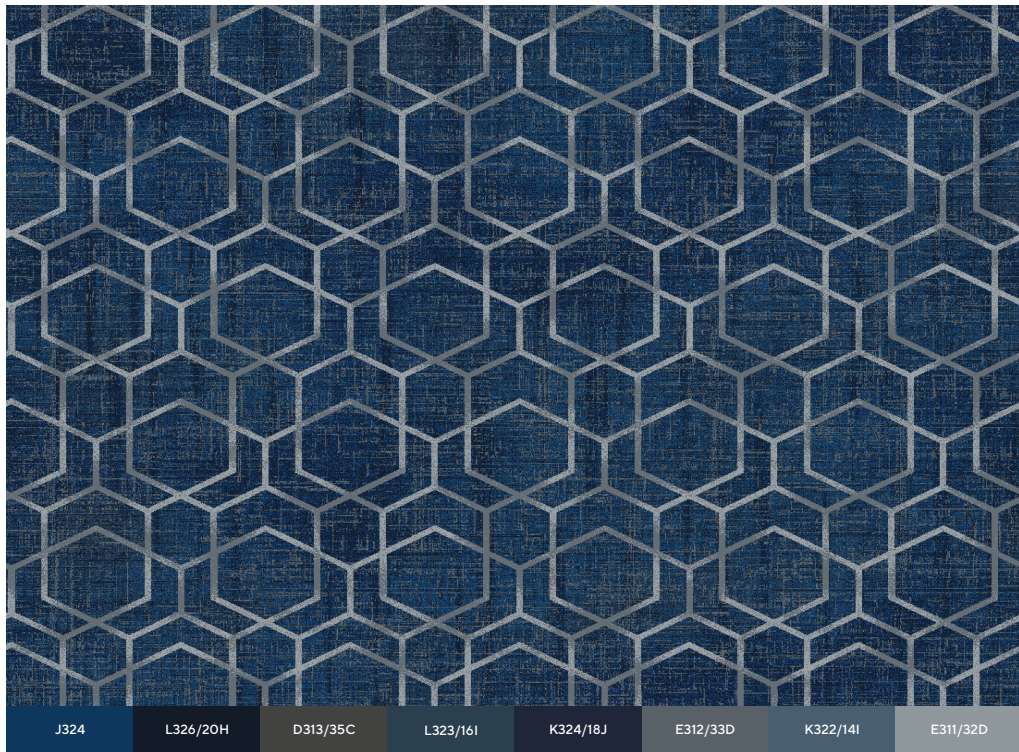


Design: GX065321P001
Repeat Size: 157" x 150" | 4m x 3.8m



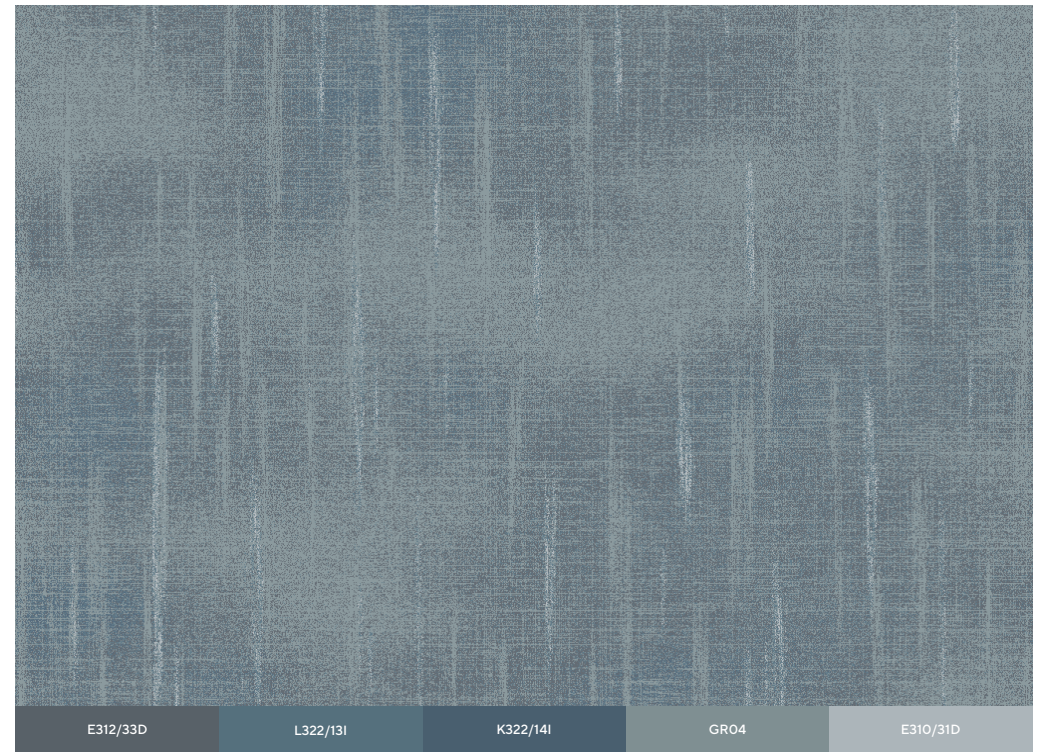
Design: FX065323P003
Repeat Size: 157" x 150" | 4m x 3.8m





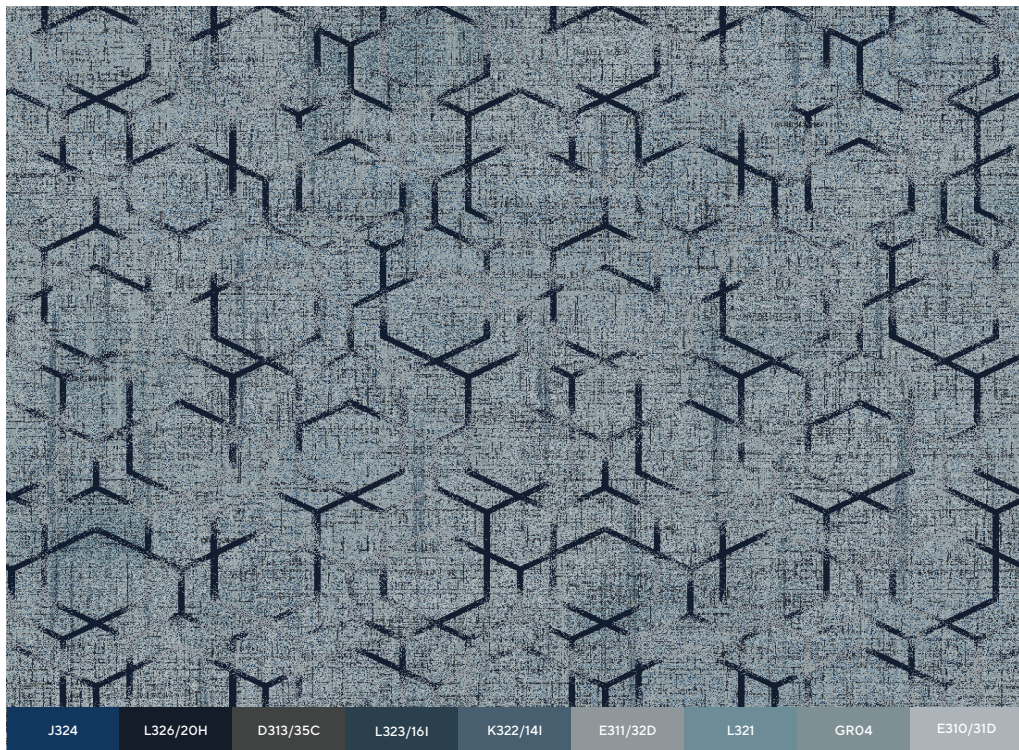
J324 L326/20H D313/35C L323/161 K324/18J E312/33D K322/14I E311/32D

Design: GX065340P003
Repeat Size: 157" x 118" | 4m x 3m



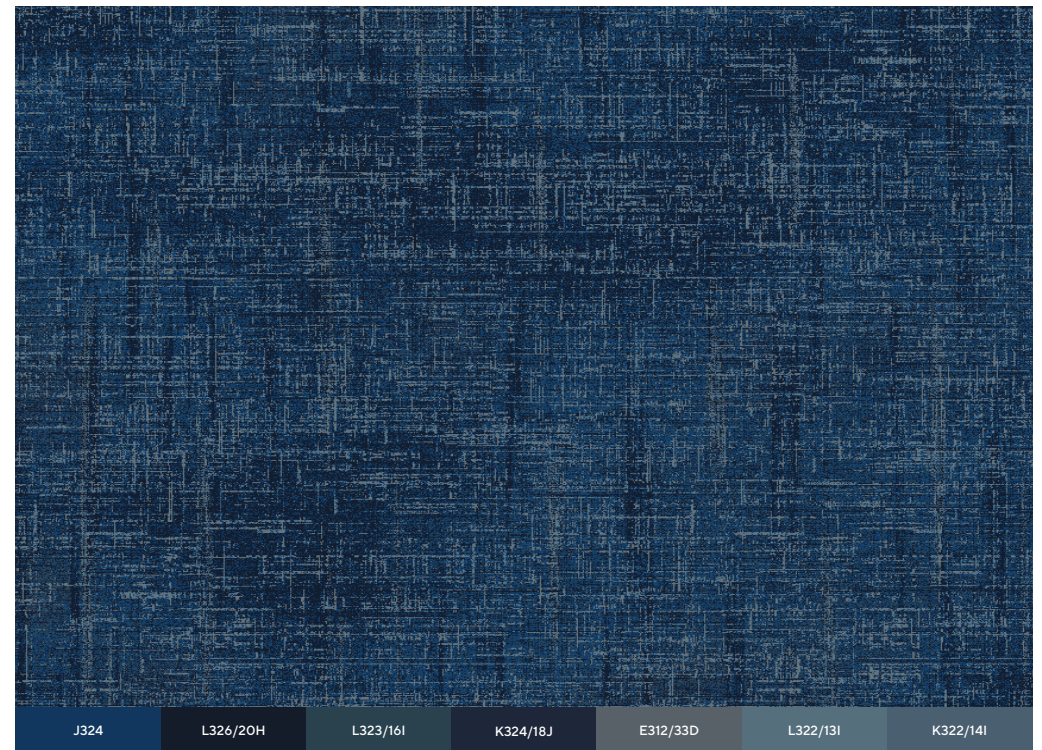
E312/33D L322/13I K322/14I GR04 E310/31D

Design: FX065343P002
Repeat Size: 157" x 118" | 4m x 3m



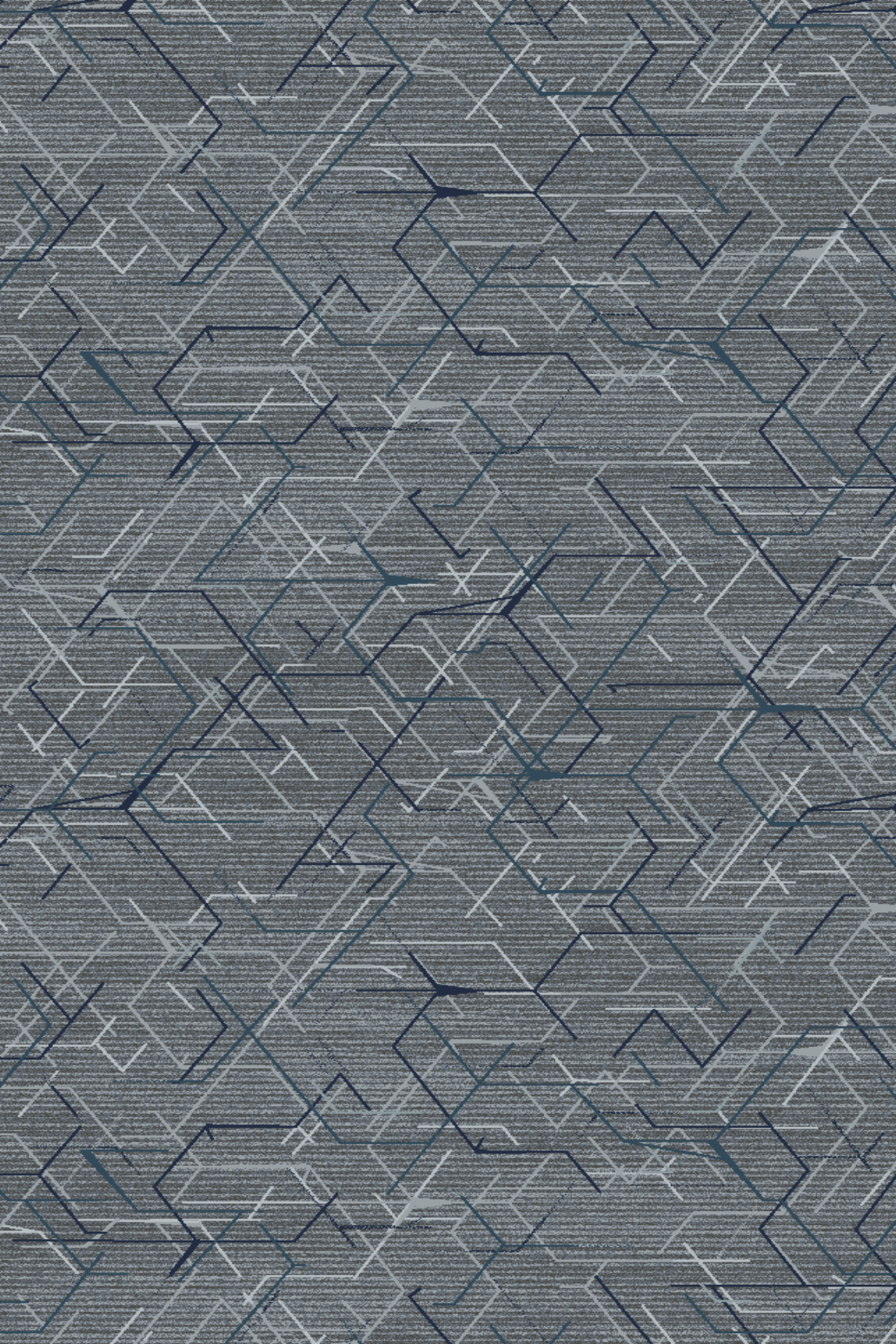
J324 L326/20H D313/35C L323/161 K322/14I E311/32D L321 GR04 E310/31D

Design: GX065341P003
Repeat Size: 157" x 118" | 4m x 3m



J324 L326/20H L323/161 K324/18J E312/33D L322/13I K322/14I

Design: FX065342P003
Repeat Size: 157" x 118" | 4m x 3m



D313/35C

L323/16I

K324/18J

E312/33D

E311/32D

GRO4

E310/31D

Design: GX065325P001
Repeat Size: 157" x 78" | 4m x 2m



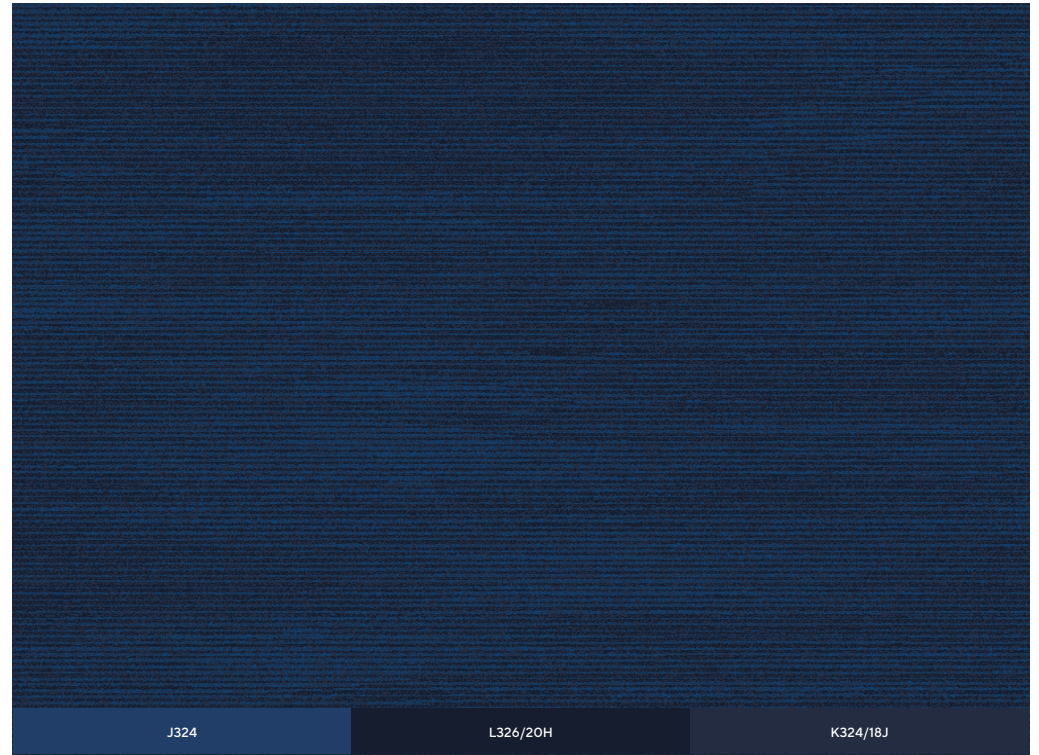
E312/33D

E311/32D

GR04

E310/31D

Design: GX065326P002
Repeat Size: 157" x 78" | 4m x 2m

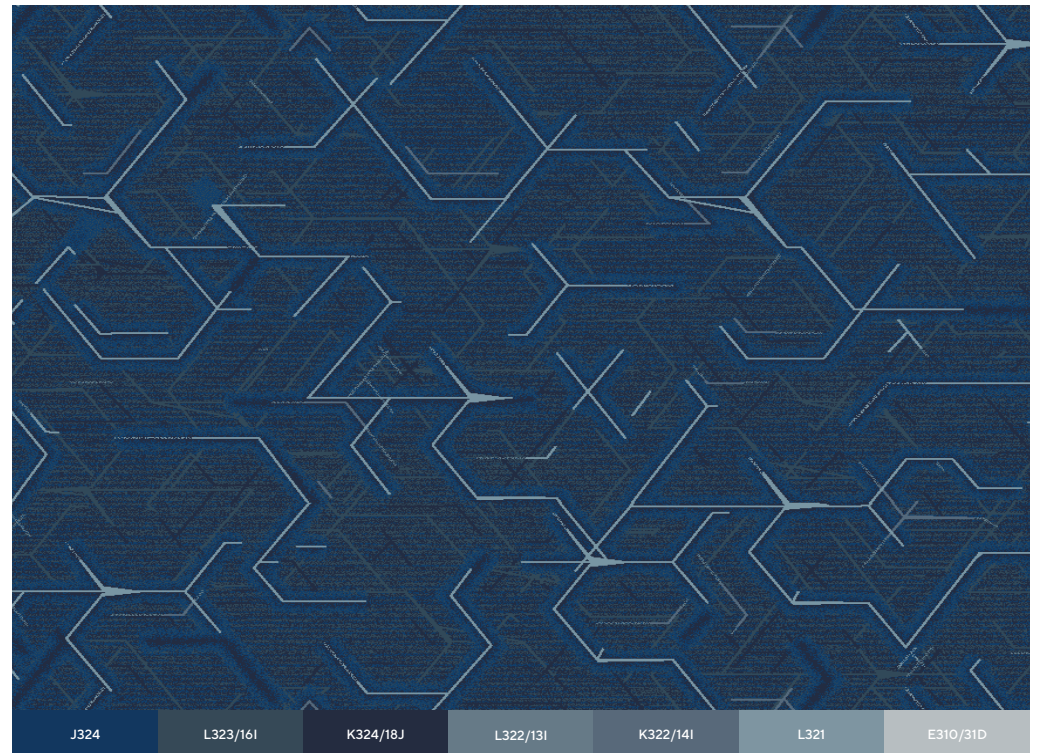


J324

L326/20H

K324/18J

Design: BX065327P003
Repeat Size: 157" x 78" | 4m x 2m



J324

L323/16I

K324/18J

L322/13I

K322/14I

L321

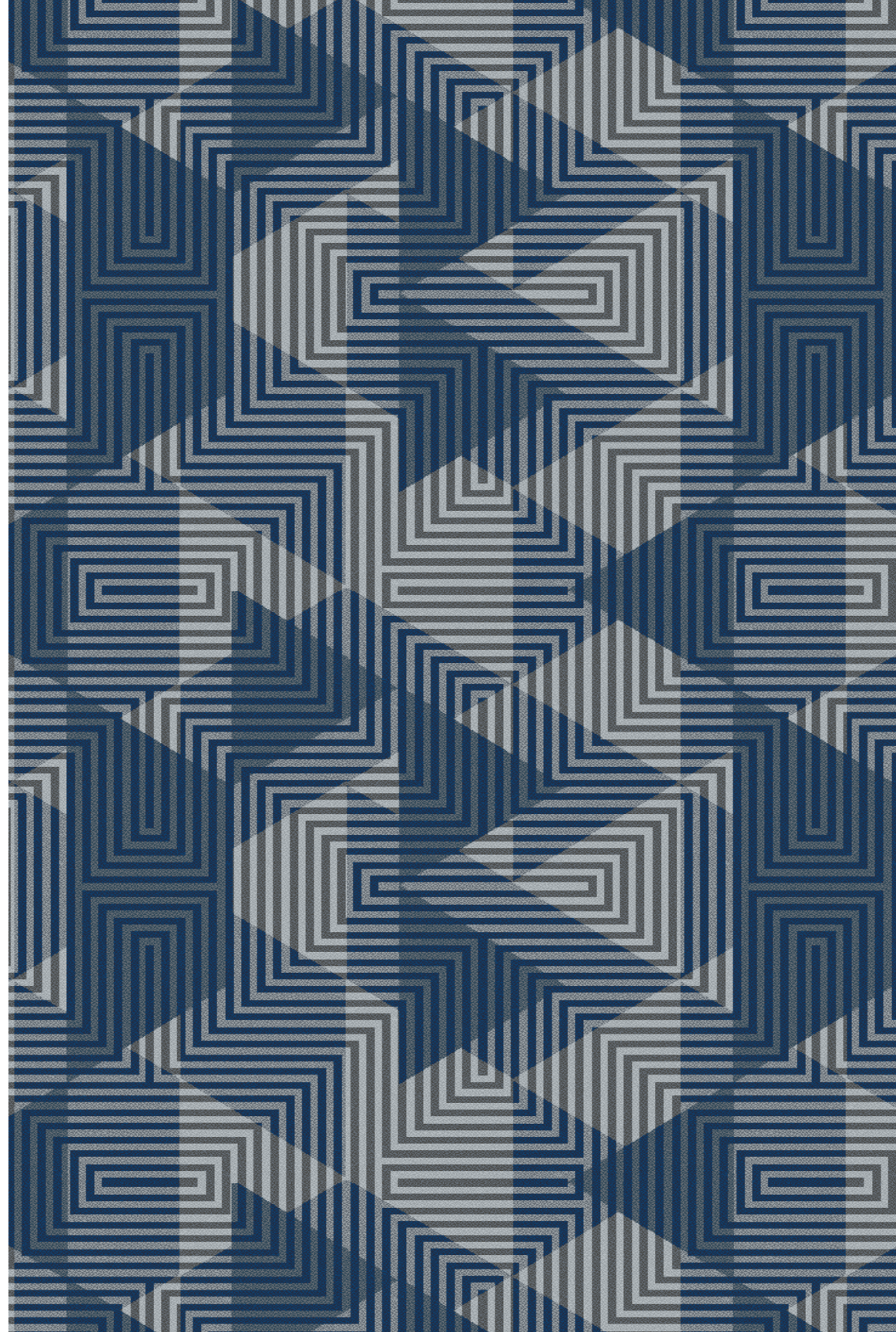
E310/31D

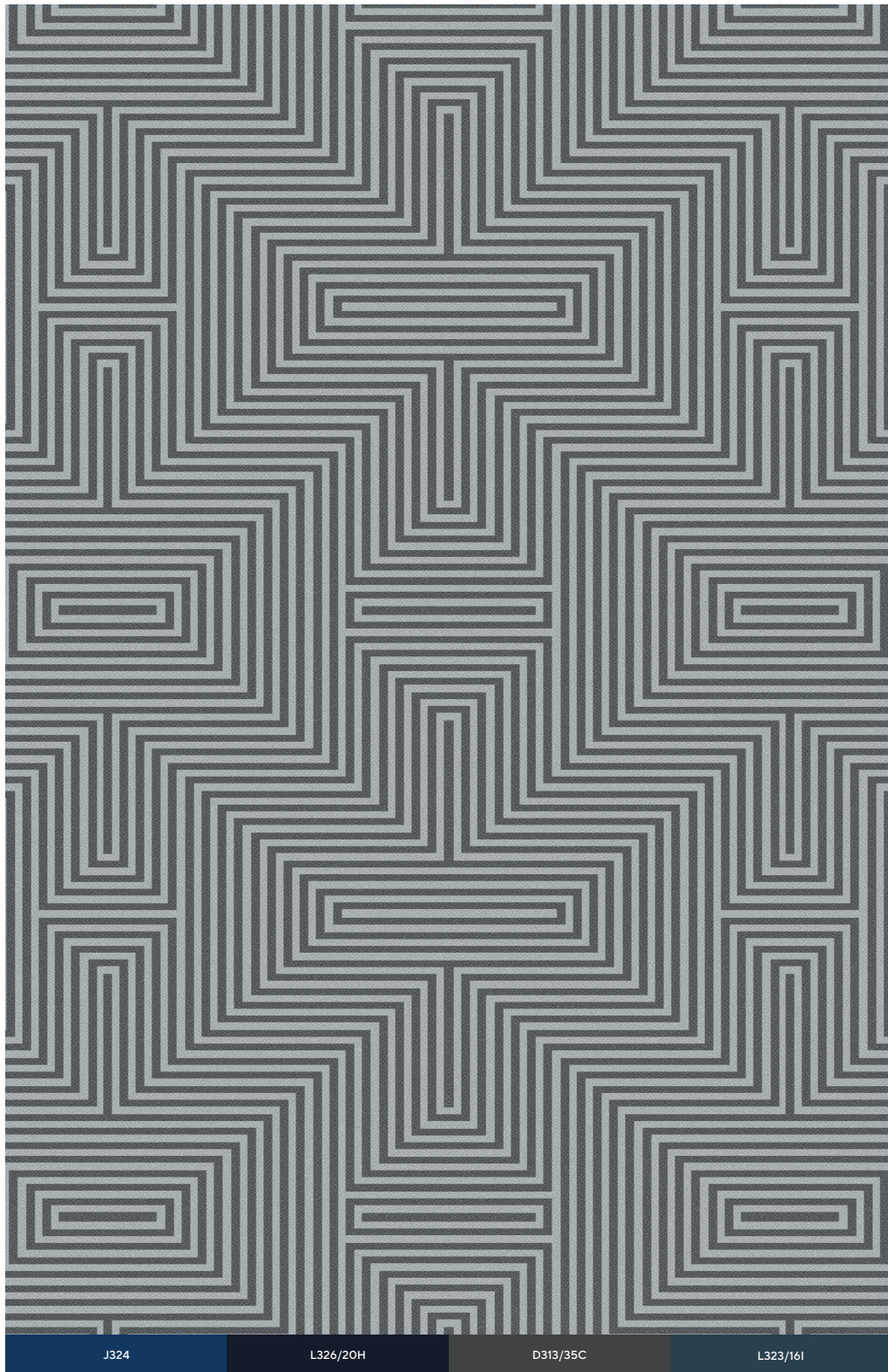
Design: GX065324P003
Repeat Size: 157" x 78" | 4m x 2m



J324	D313/35C	L323/161	K324/18J	E312/33D
E311/32D	E310/31D			

Design: GX065345P002
Repeat Size: 157" x 67" | 4m x 1.7m





J324

L326/20H

D313/35C

L323/16I

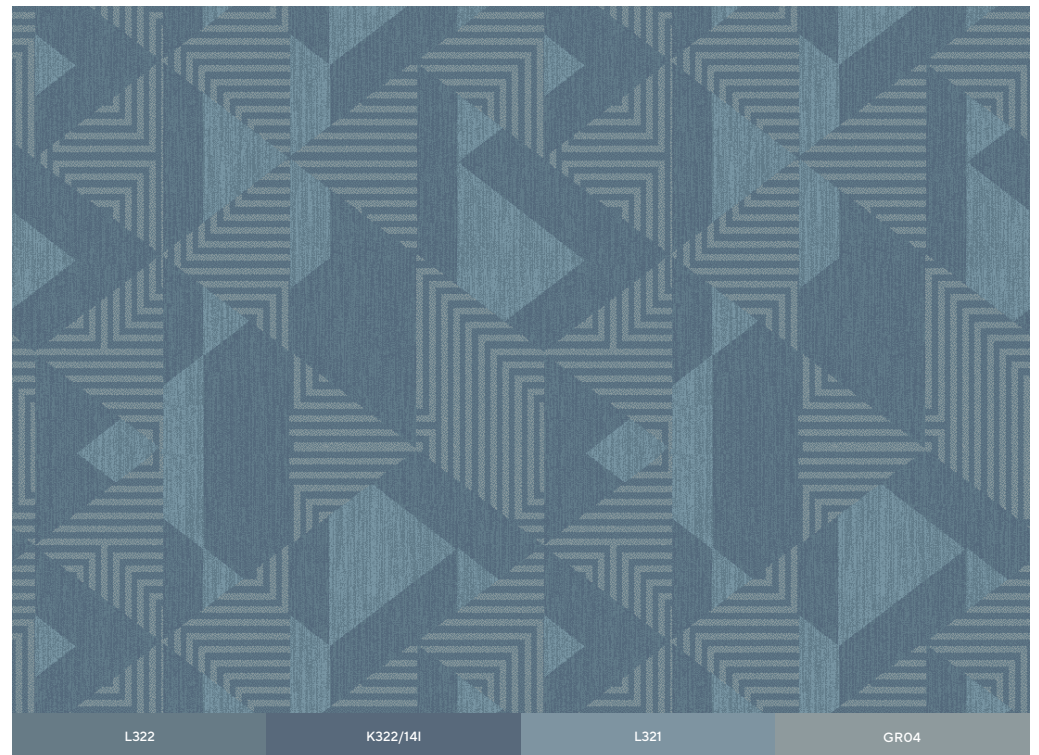
Design: GX065344P002
Repeat Size: 157" x 67" | 4m x 1.7m



L323/16I

L322

Design: BX065347P003
Repeat Size: 157" x 67" | 4m x 1.7m



L322

K322/14I

L321

GR04

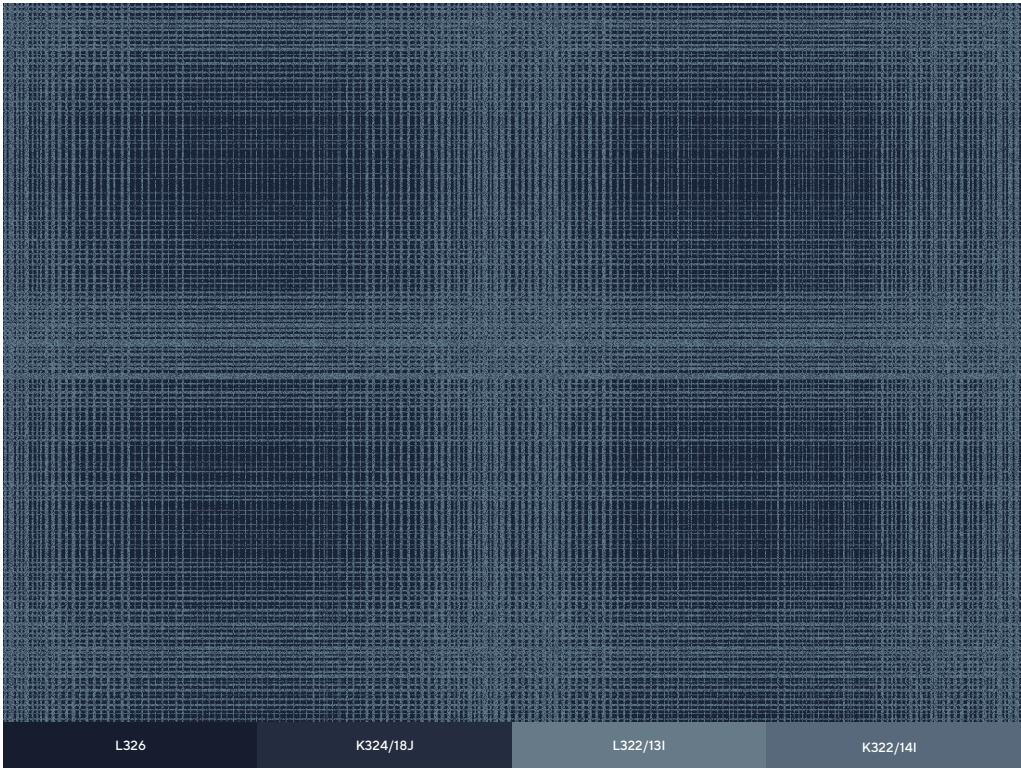
Design: GX065346P003
Repeat Size: 157" x 67" | 4m x 1.7m



J324	L326/20H	D313/35C	L323/16I	E312/33D
L322/13I	E311/32D	GR04	E310/31D	

Design: GX065328P002
Repeat Size: 157" x 98" | 4m x 2.5m





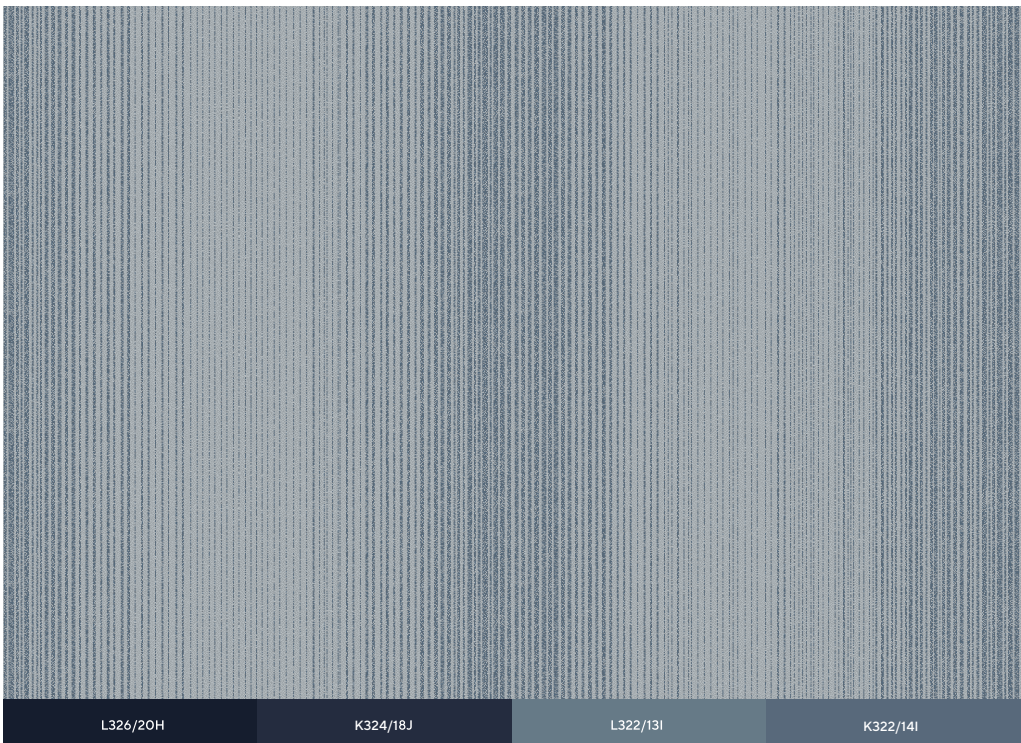
L326

K324/18J

L322/13I

K322/14I

Design: GX065329P001
Repeat Size: 157" x 98" | 4m x 2.5m



L326/20H

K324/18J

L322/13I

K322/14I

Design: GX065331P001
Repeat Size: 157" x 98" | 4m x 2.5m



J324

L326/20H

L323/16I

K324/18J

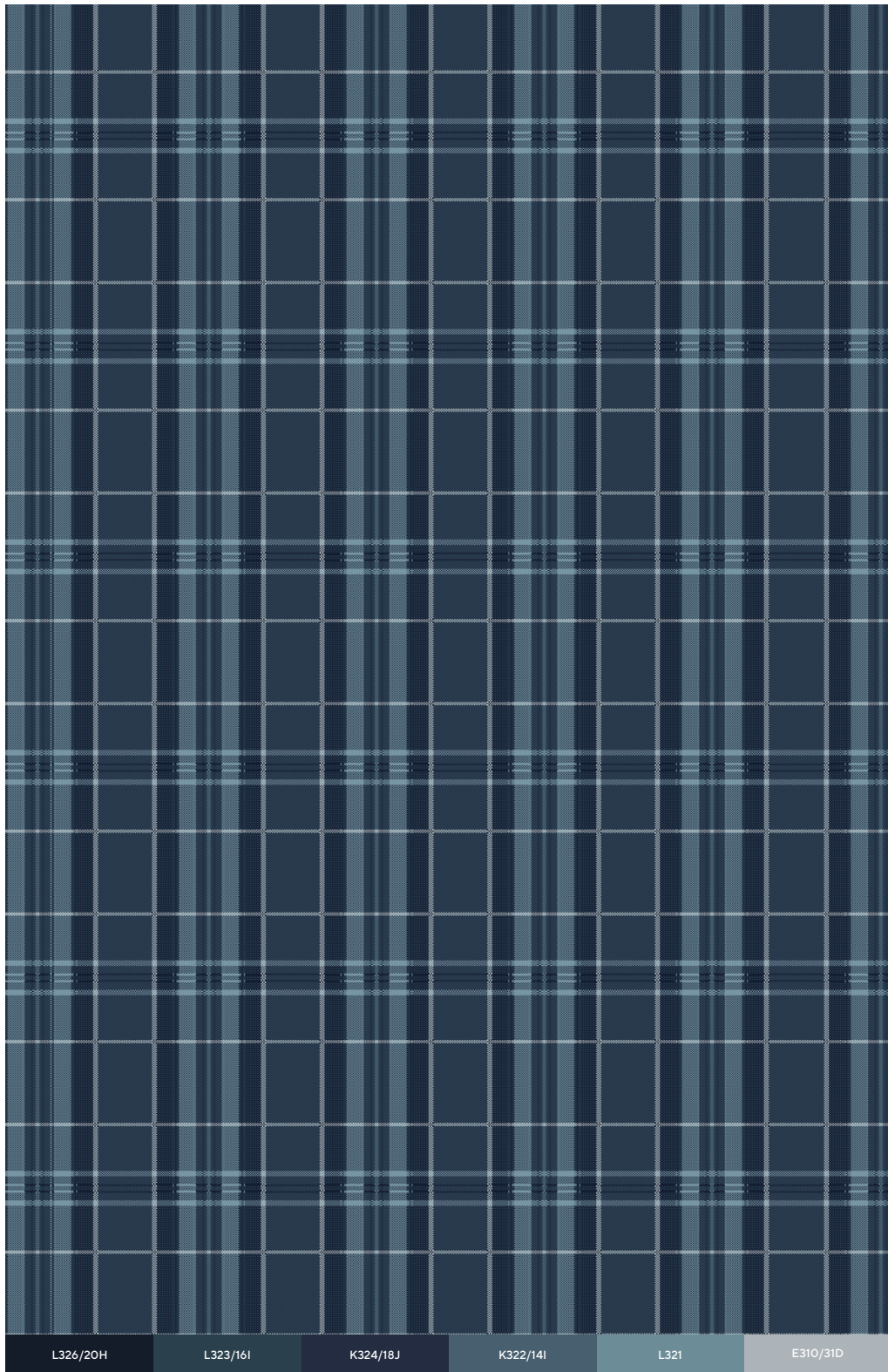
E311/32D

K322/14I

GRO4

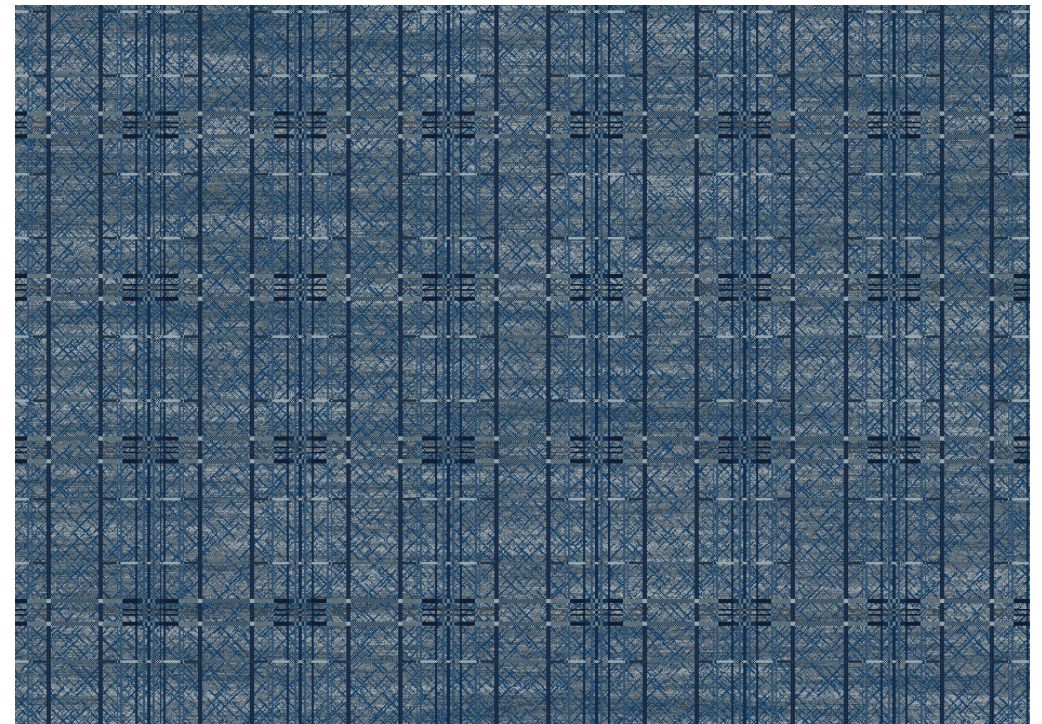
Design: GX065330P003
Repeat Size: 157" x 98" | 4m x 2.5m





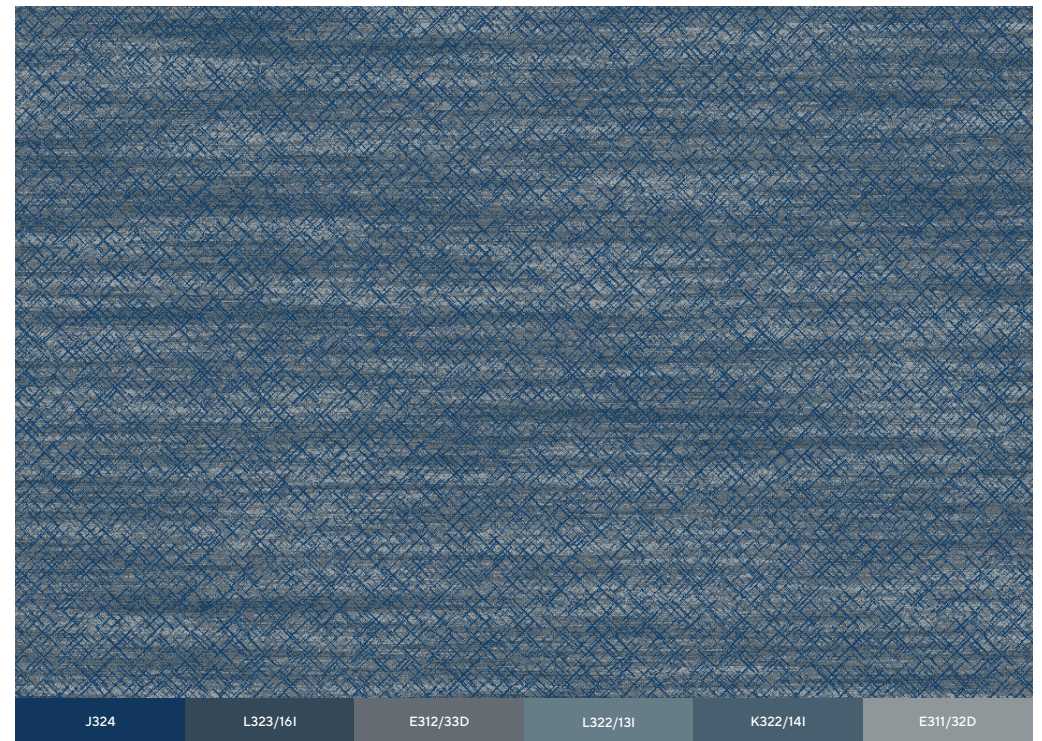
L326/20H L323/161 K324/18J K322/141 L321 E310/31D

Design: GX065332P002
Repeat Size: 157" x 150" | 4m x 3.8m



J324 L326/20H D313/35C L323/161 K324/18J E312/33D L322/131 K322/141 E311/32D L321 E310/31D

Design: GX065333P001
Repeat Size: 157" x 150" | 4m x 3.8m



J324 L323/161 E312/33D L322/131 K322/141 E311/32D

Design: FX065334P002
Repeat Size: 157" x 150" | 4m x 3.8m

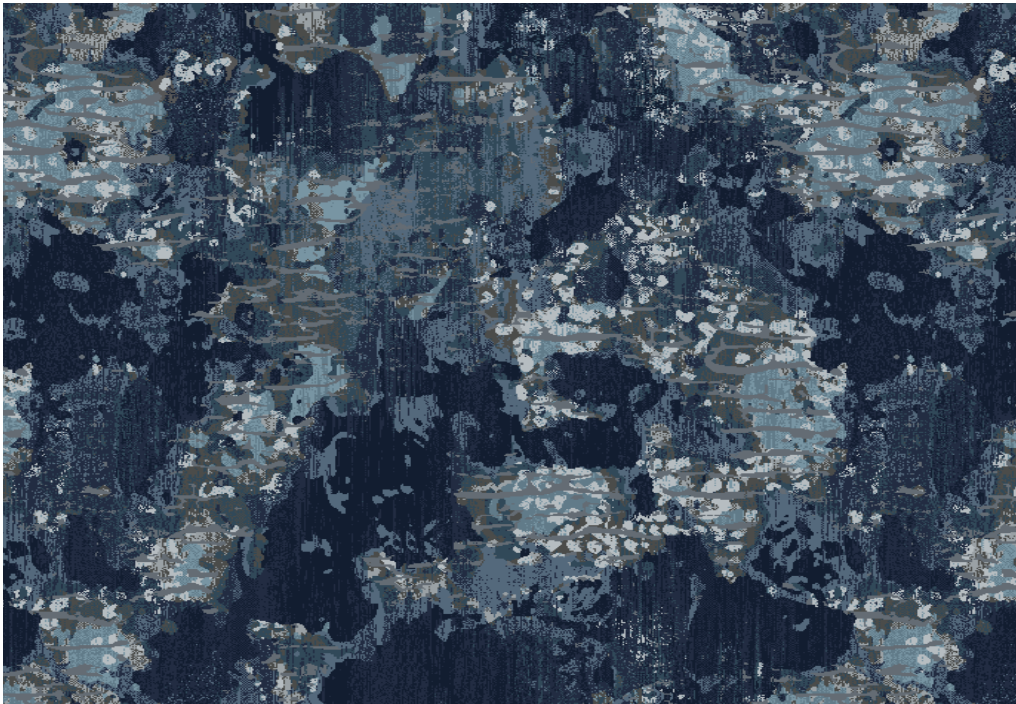


L323/161

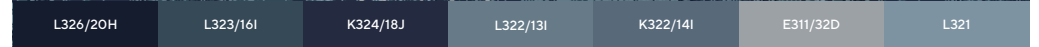
E312/33D

E311/32D

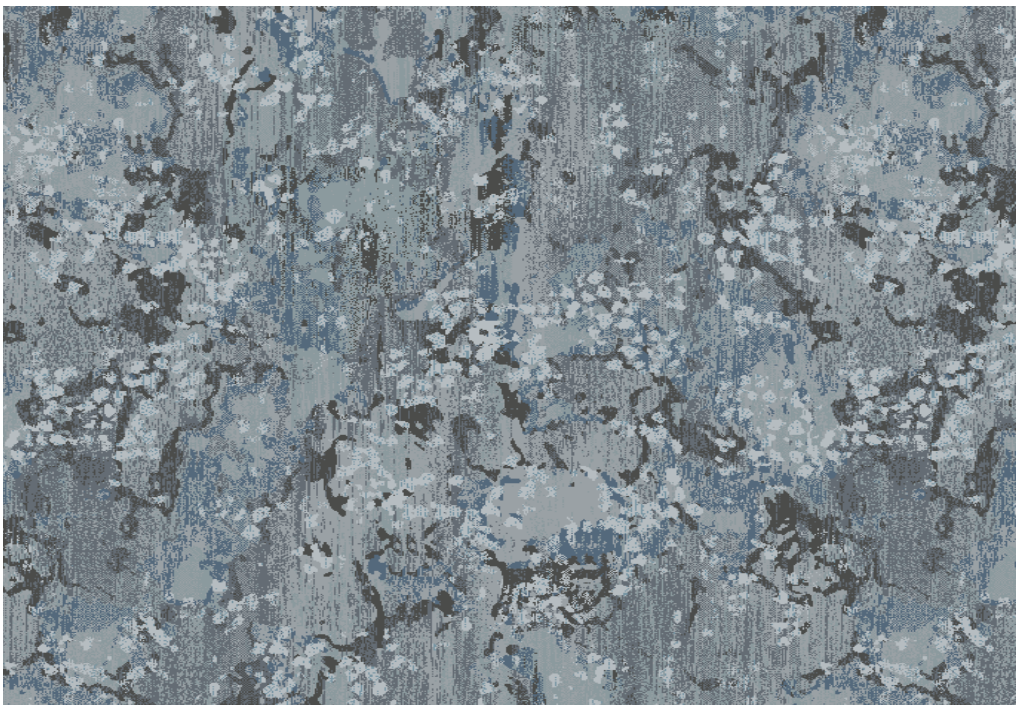
Design: FX065335P001
Repeat Size: 157" x 150" | 4m x 3.8m



Design: FX065336P003
Repeat Size: 157" x 150" | 4m x 3.8m



Design: FX065338P003
Repeat Size: 157" x 150" | 4m x 3.8m



Design: FX065337P001
Repeat Size: 157" x 150" | 4m x 3.8m

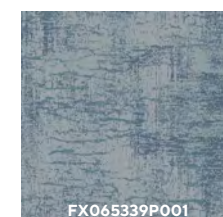
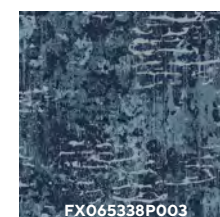
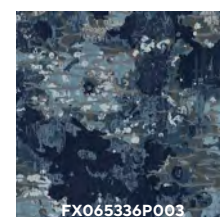
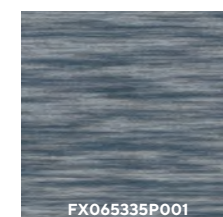
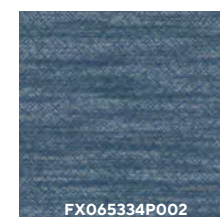
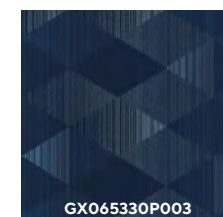
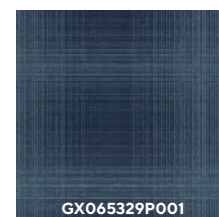
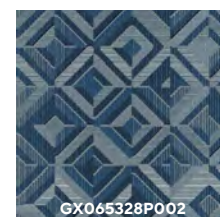
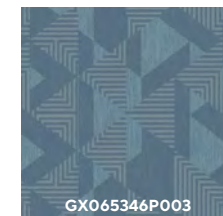
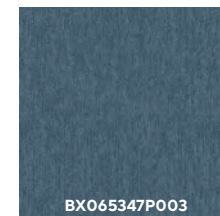
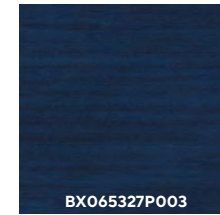
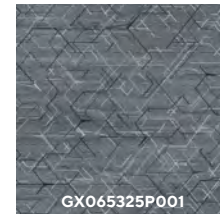
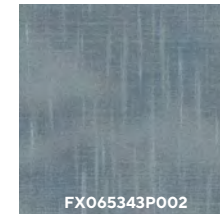
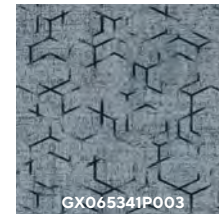
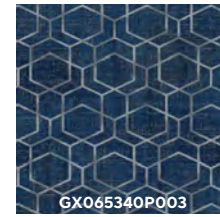
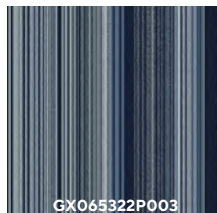


Design: FX065339P001
Repeat Size: 157" x 150" | 4m x 3.8m

SPECIFICATIONS:

	7 ROW	8 ROW	9 ROW	10 ROW
CONSTRUCTION	Woven Axminster	Woven Axminster	Woven Axminster	Woven Axminster
YARN CONTENT	80% WOOL, 20% NYLON	80% WOOL, 20% NYLON	80% WOOL, 20% NYLON	80% WOOL, 20% NYLON
PITCH	7	7	7	7
ROWS	7	8	9	10
PILE HEIGHT	6.4mm 0.250in	6.4mm 0.250in	6.4mm 0.250in	6.4mm 0.250in
PILE WEIGHT	954 gm/sm 28.1oz/sy	1091 gm/sm 32.3oz/sy	1227 gm/sm 36.2oz/sy	1363 gm/sm 40.2oz/sy
EFFECTIVE PILE WEIGHT	706 gm/sm 20.8oz/sy	807 gm/sm 23.8 oz/sy	908 gm/sm 26.8 oz/sy	1009 gm/sm 29.8 oz/sy
TOTAL WEIGHT	1947 gm/sm 57.4 oz/sy	2054 gm/sm 60.6 oz/sy	2136 gm/sm 63.0 oz/sy	2321 gm/sm 68.4 oz/sy
TOTAL THICKNESS	9.0mm 0.355in	9.0mm 0.355in	9.0mm 0.355in	9.0mm 0.355in
BACKING YARNS	Polyester/ Polypropylene	Polyester/ Polypropylene	Polyester/ Polypropylene	Polyester/ Polypropylene

DESIGN INDEX:





AMERICAS

+1 800 433 2440
calhoun@royalthai.com

THAILAND

+66 2314 5402
bangkok@royalthai.com

MIDDLE EAST

+971 4 451 7659
dubai@royalthai.com

UK

+44 7741 261203
unitedkingdom@royalthai.com

INDIA

+91 124 469 3900
india@royalthai.com

SINGAPORE

+65 6235 2477
singapore@royalthai.com

HONG KONG

+852 2359 8900
hongkong@royalthai.com

MACAU

+852 2359 8900
macau@royalthai.com

CHINA

+86 136 0030 8308
china@royalthai.com

ROYALTHAI.COM