



**ROYAL  
THAI**

**AXPEDITE**

*CARMINE*



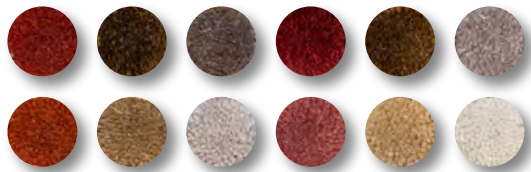
## AXPEDITE COLOR STUDY: CARMINE

Illustrated across a variety of Axminster designs recolored using four different pre-created palettes, our Axpedit Color Studies are an ongoing experiment mixing color application + manufacturing efficiency that delivers a fresh perspective on ready to order Axminster carpet.

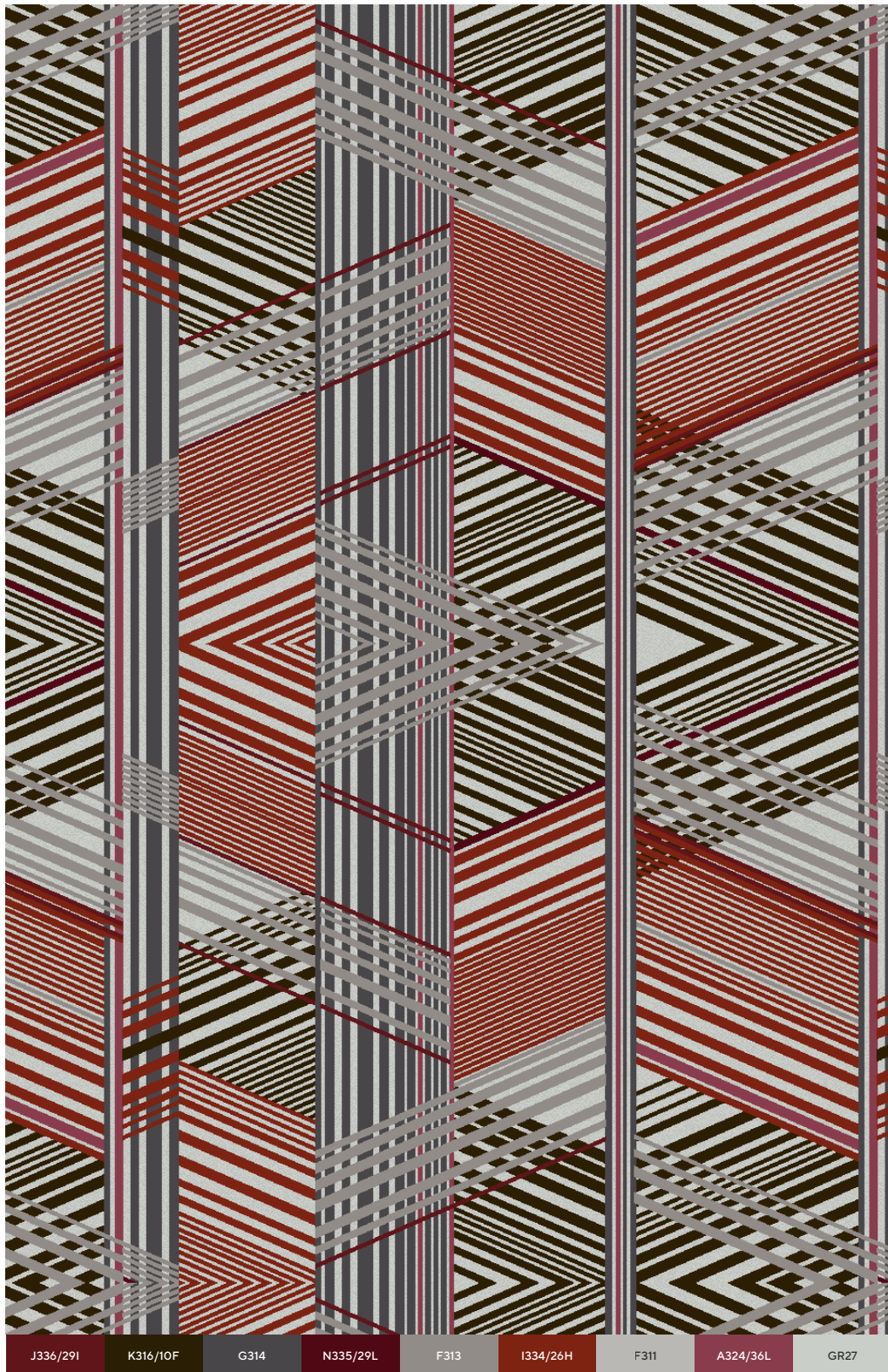
Carmine is the second installment, of our Axpedit Color Studies showcases warm neutrals and punchy red hues.

The patterns are built to work with one another. Throughout the color studies are geometric repeating designs, textural layers and complementary coordinates all working together and able for specification within four different row counts.

Available in our standard 80% wool, 20% nylon yarn blend, these semi-customizable Axminster patterns are ready to weave on 4-meter-wide looms in our vertically integrated facility in Thailand.

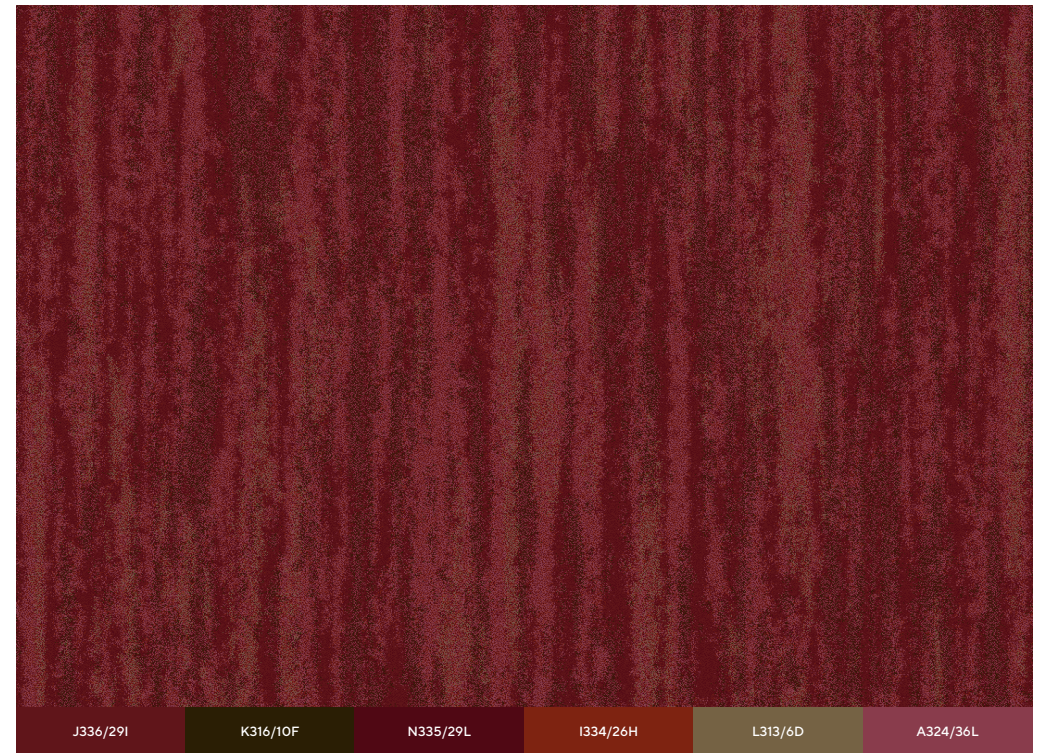






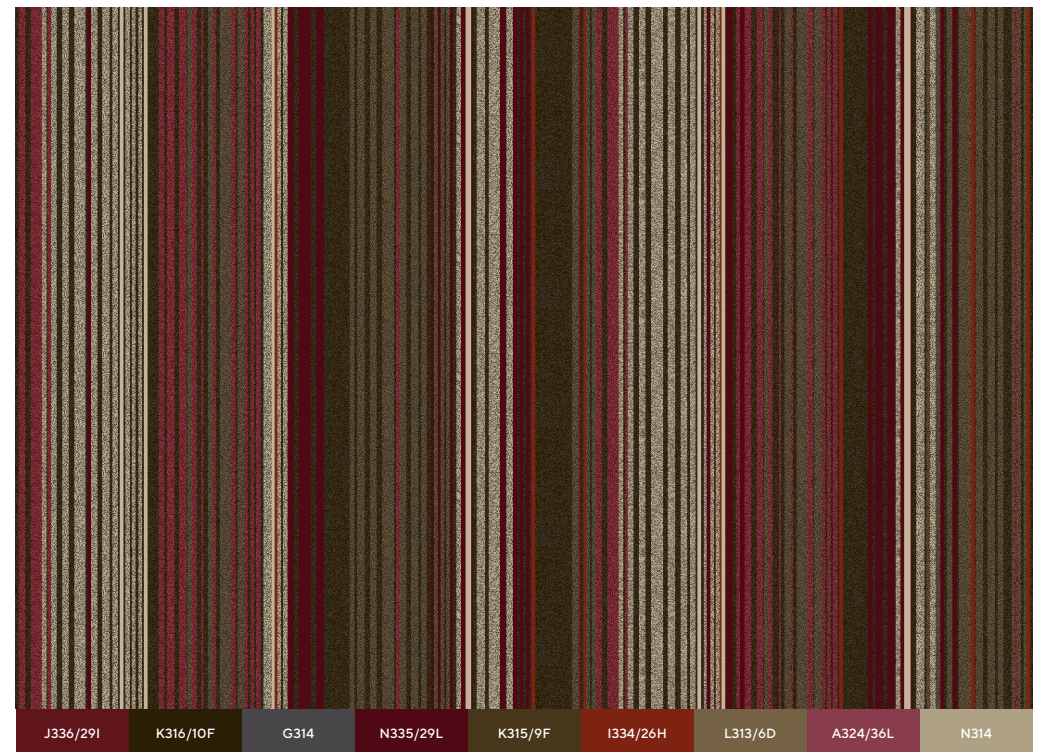
J336/29I K316/10F G314 N335/29L F313 I334/26H F311 A324/36L GR27

Design: GX065044P001  
Repeat Size: 157" x 150" | 4m x 3.8m



J336/29I K316/10F N335/29L I334/26H L313/6D A324/36L

Design: FX065048P001  
Repeat Size: 157" x 150" | 4m x 3.8m



J336/29I K316/10F G314 N335/29L K315/9F I334/26H L313/6D A324/36L N314

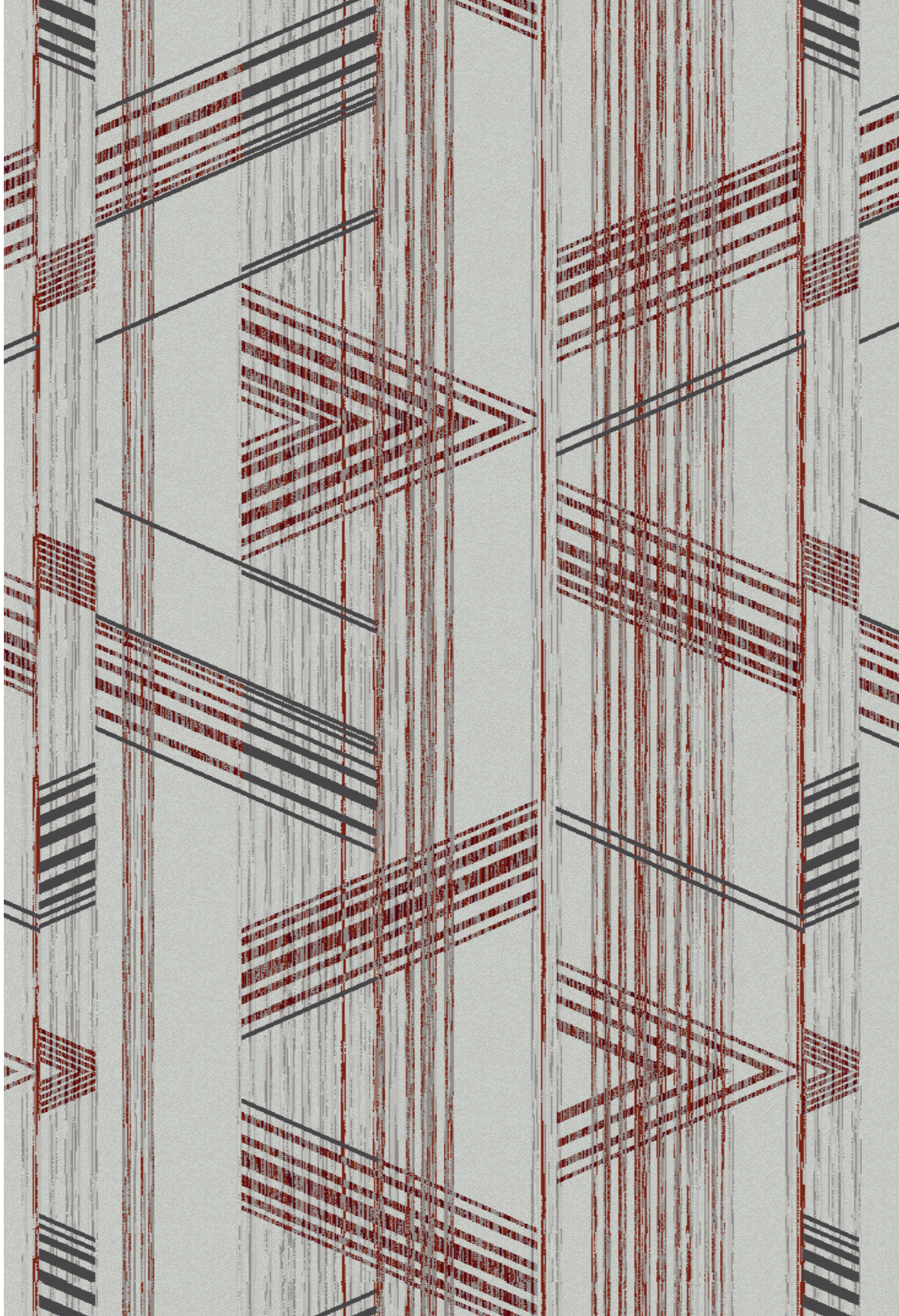
Design: GX065047P003  
Repeat Size: 157" x 150" | 4m x 3.8m





G314	N335/29L	F313
I334/26H	F311	GR27

Design: GX065045P002  
Repeat Size: 157" x 150" | 4m x 3.8m







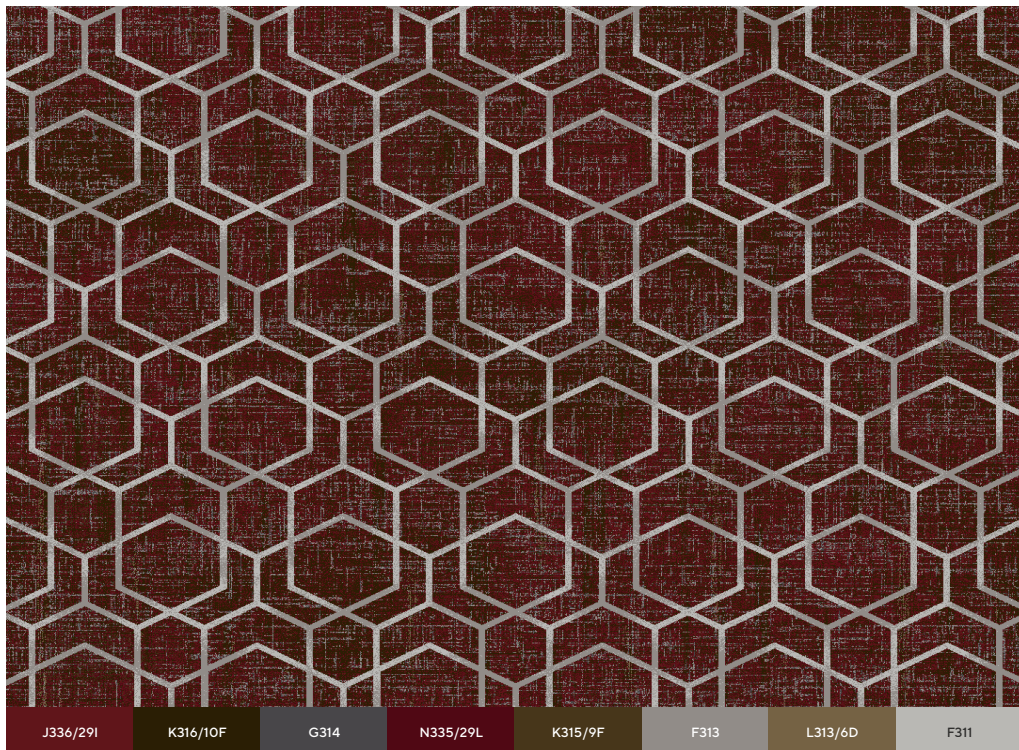




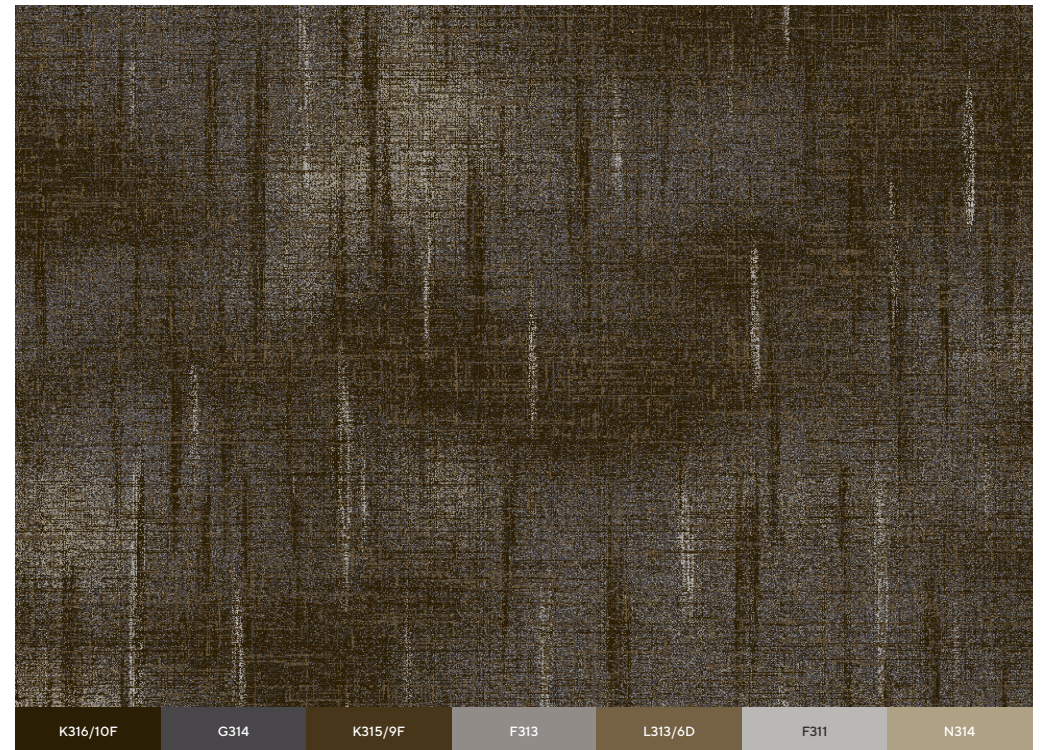
Design: GX065309P003  
Repeat Size: 157" x 118" | 4m x 3m



Design: FX065311P002  
Repeat Size: 157" x 118" | 4m x 3m

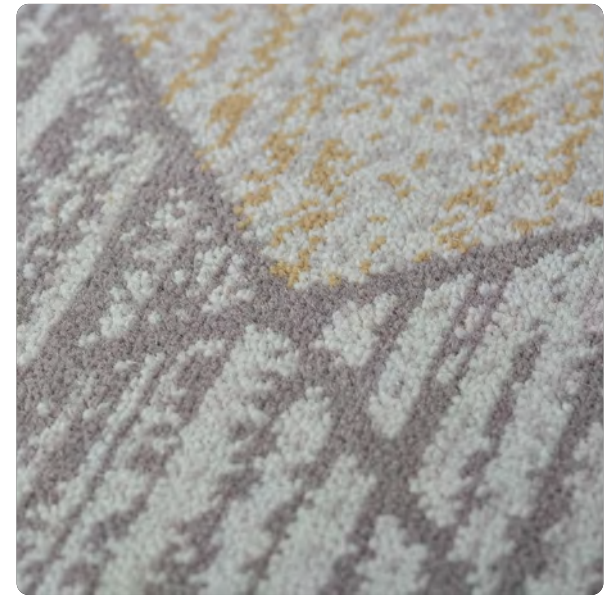


Design: GX065308P001  
Repeat Size: 157" x 118" | 4m x 3m



Design: FX065310P001  
Repeat Size: 157" x 118" | 4m x 3m





Design: GX065302P001  
Repeat Size: 157" x 78" | 4m x 2m

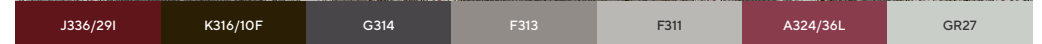
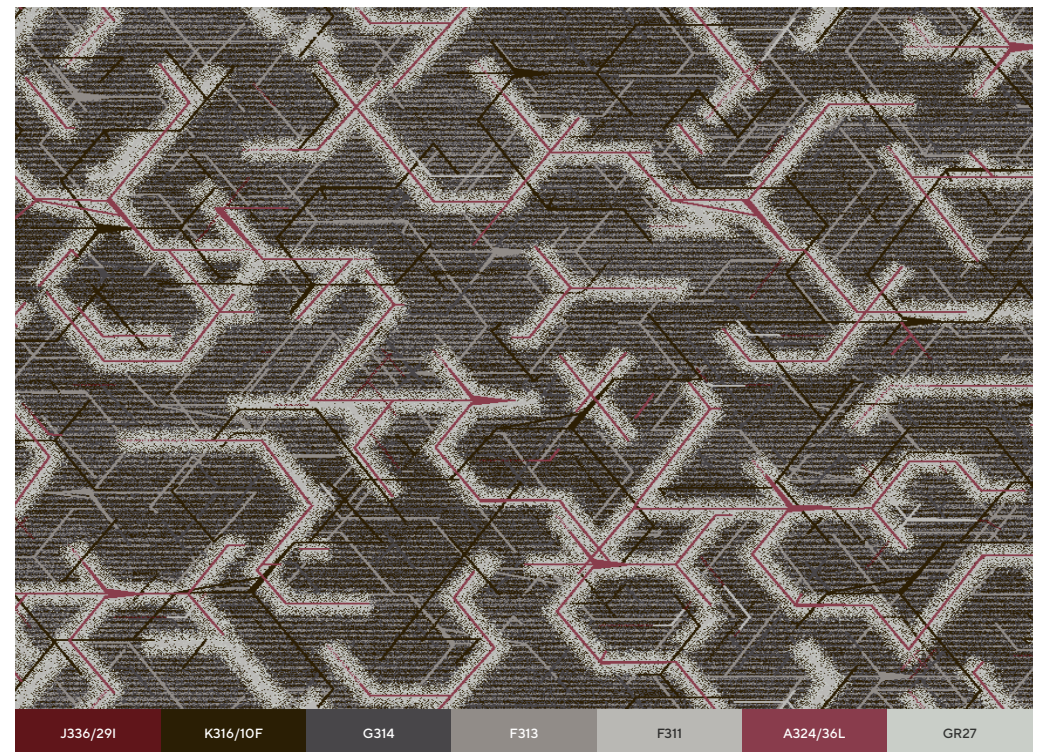




Design: GX065301P003  
Repeat Size: 157" x 78" | 4m x 2m



Design: BX065303P001  
Repeat Size: 157" x 78" | 4m x 2m



Design: GX065300P003  
Repeat Size: 157" x 78" | 4m x 2m





L313/6D

F311

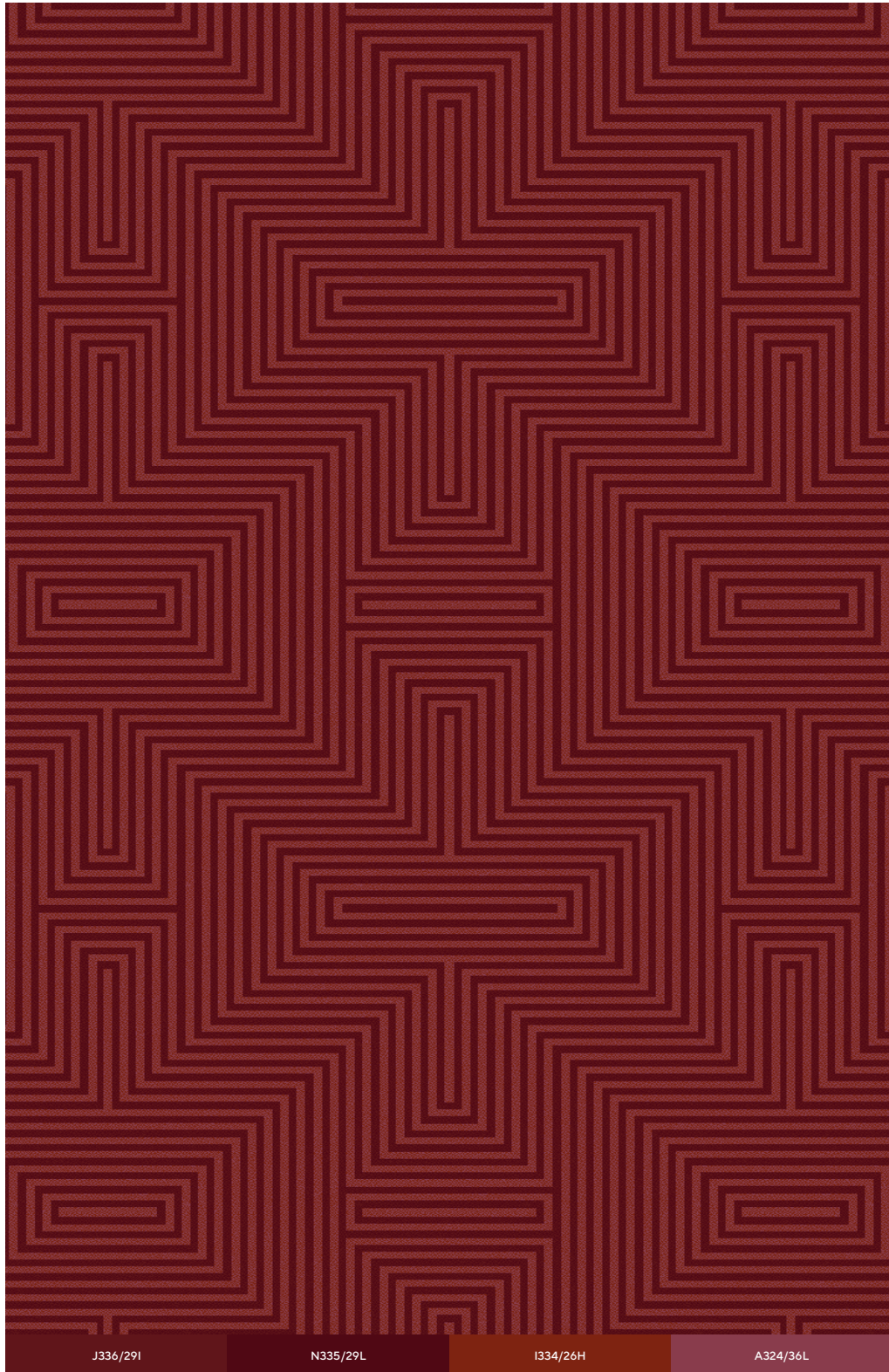
N314

GR27

Design: GX065314P003  
Repeat Size: 157" x 67" | 4m x 1.7m







J336/29I

N335/29L

I334/26H

A324/36L

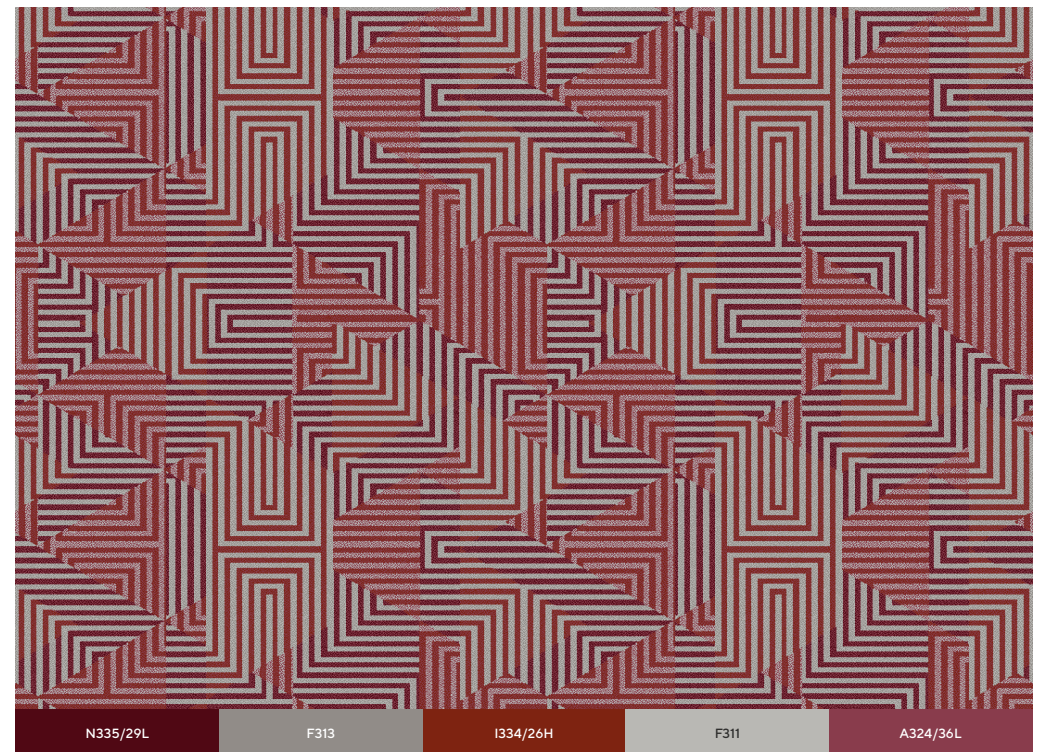
Design: GX065312P001  
Repeat Size: 157" x 67" | 4m x 1.7m



F313

F311

Design: BX065315P003  
Repeat Size: 157" x 67" | 4m x 1.7m



N335/29L

F313

I334/26H

F311

A324/36L

Design: GX065313P003  
Repeat Size: 157" x 67" | 4m x 1.7m





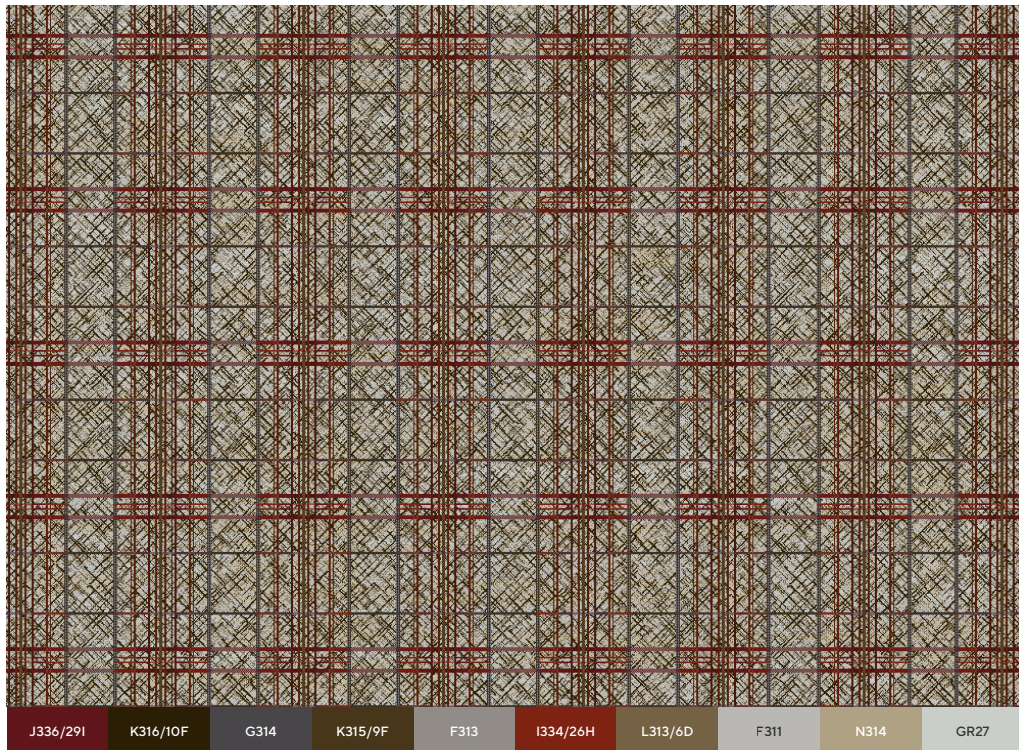




Design: GX065304P002  
Repeat Size: 157" x 157" | 4m x 4m



Design: FX065306P003  
Repeat Size: 157" x 157" | 4m x 4m

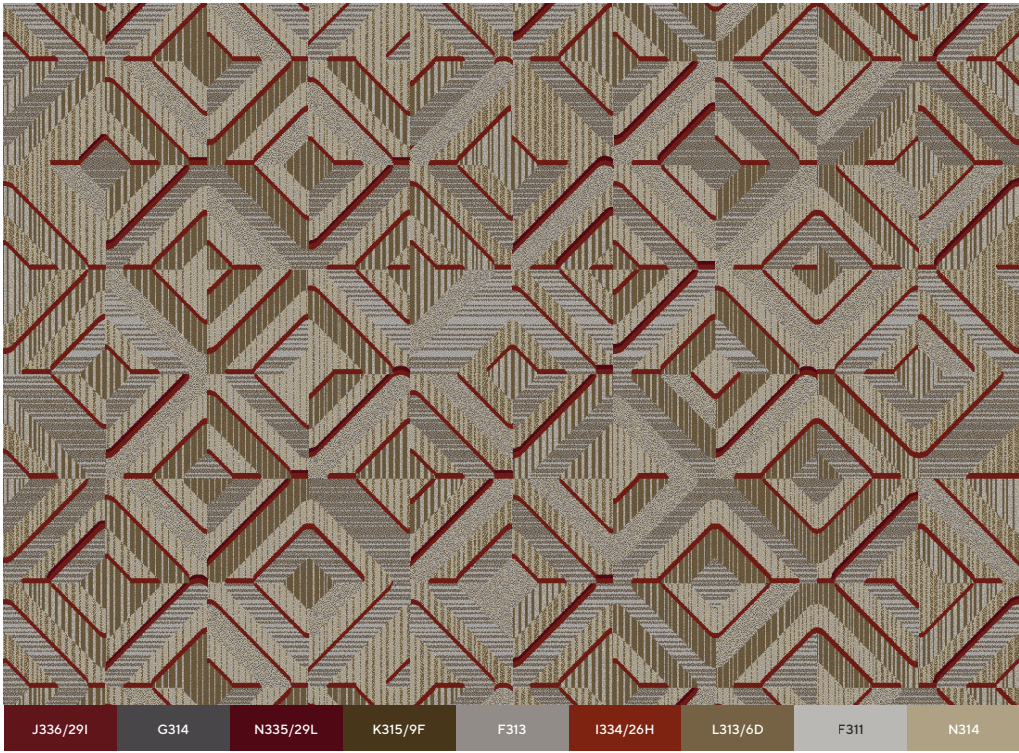


Design: GX065305P003  
Repeat Size: 157" x 157" | 4m x 4m



Design: FX065307P001  
Repeat Size: 157" x 157" | 4m x 4m

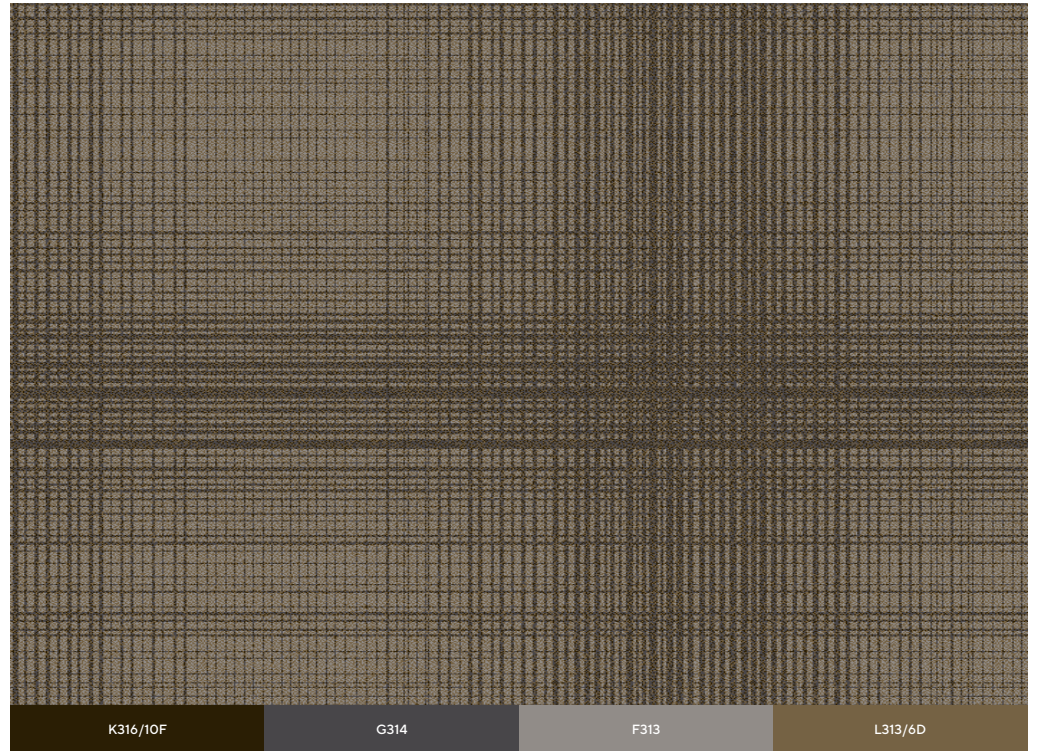




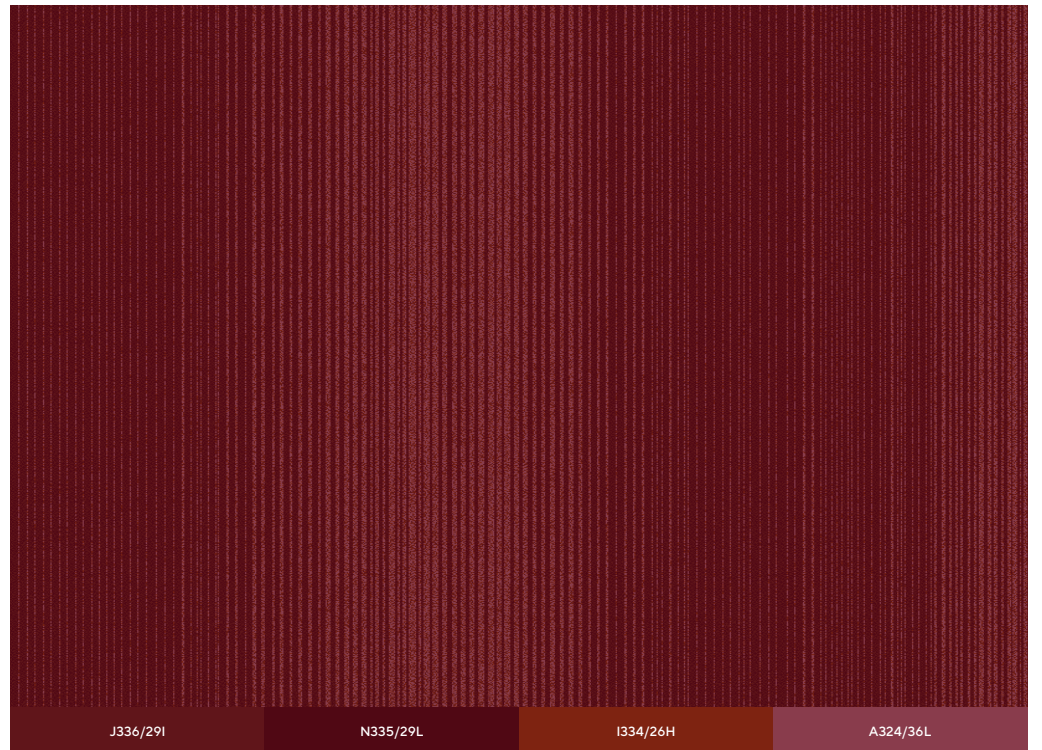
Design: GX065049P003  
Repeat Size: 157" x 98" | 4m x 2.5m



Design: GX065051P003  
Repeat Size: 157" x 98" | 4m x 2.5m



Design: GX065050P001  
Repeat Size: 157" x 98" | 4m x 2.5m

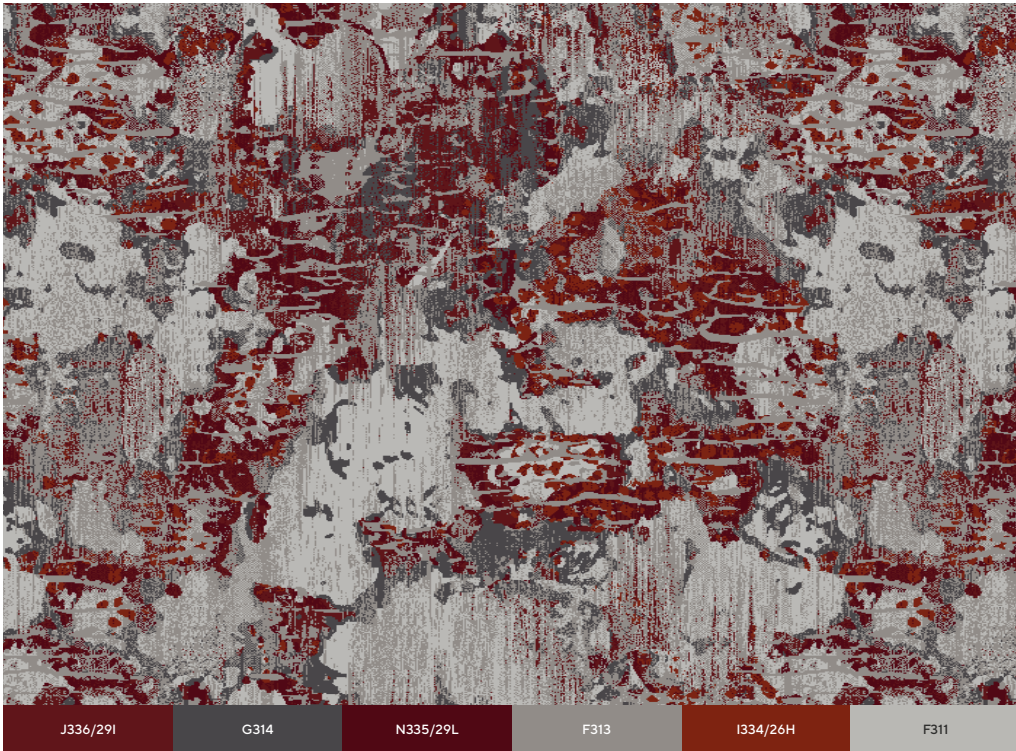


Design: GX065052P001  
Repeat Size: 157" x 98" | 4m x 2.5m



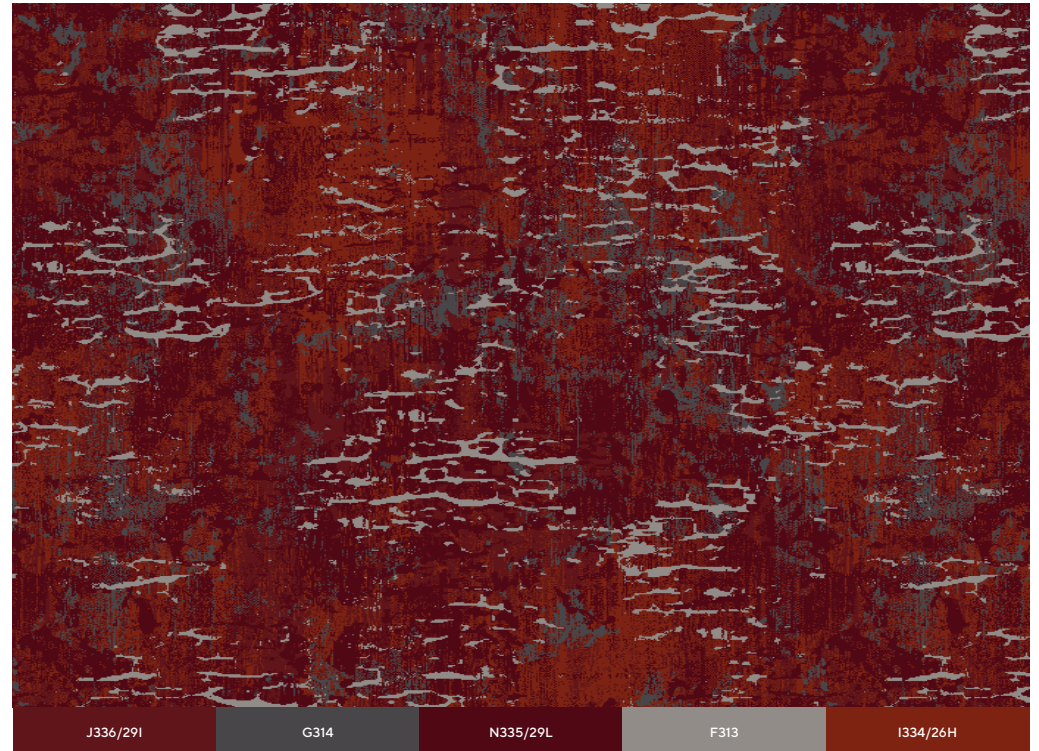






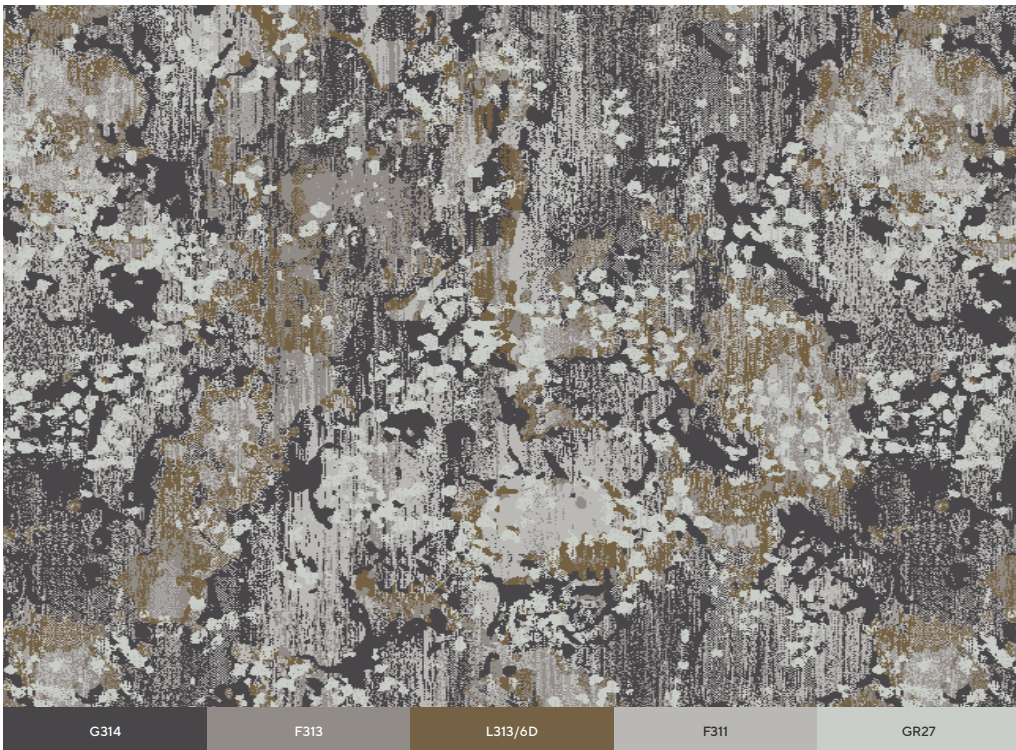
J336/29I G314 N335/29L F313 I334/26H F311

Design: FX065316P001  
Repeat Size: 157" x 71" | 4m x 1.8m



J336/29I G314 N335/29L F313 I334/26H

Design: FX065318P001  
Repeat Size: 157" x 71" | 4m x 1.8m



G314 F313 L313/6D F311 GR27

Design: FX065317P003  
Repeat Size: 157" x 71" | 4m x 1.8m



G314 N335/29L F313 GR27

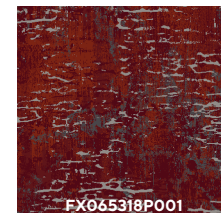
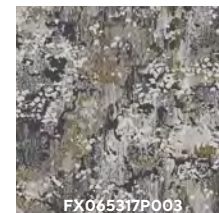
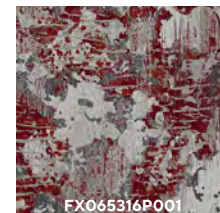
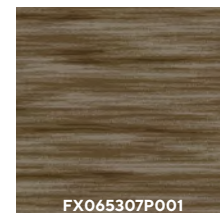
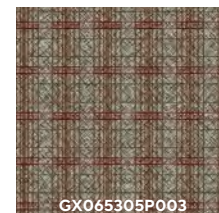
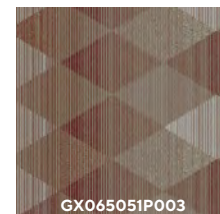
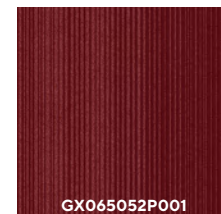
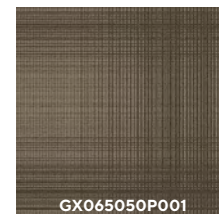
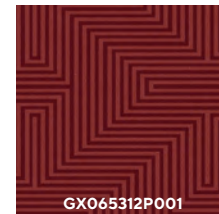
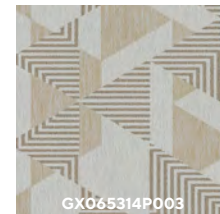
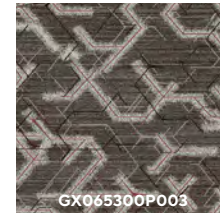
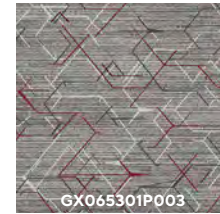
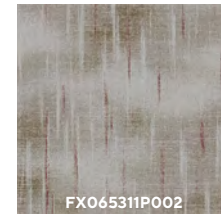
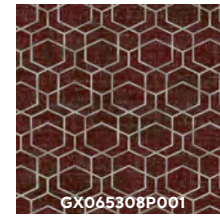
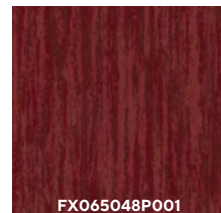
Design: FX065319P002  
Repeat Size: 157" x 71" | 4m x 1.8m



# SPECIFICATIONS:

	7 ROW	8 ROW	9 ROW	10 ROW
CONSTRUCTION	Woven Axminster	Woven Axminster	Woven Axminster	Woven Axminster
YARN CONTENT	80% WOOL, 20% NYLON	80% WOOL, 20% NYLON	80% WOOL, 20% NYLON	80% WOOL, 20% NYLON
PITCH	7	7	7	7
ROWS	7	8	9	10
PILE HEIGHT	6.4mm 0.250in	6.4mm 0.250in	6.4mm 0.250in	6.4mm 0.250in
PILE WEIGHT	954 gm/sm 28.1oz/sy	1091 gm/sm 32.3oz/sy	1227 gm/sm 36.2oz/sy	1363 gm/sm 40.2oz/sy
EFFECTIVE PILE WEIGHT	706 gm/sm 20.8oz/sy	807 gm/sm 23.8 oz/sy	908 gm/sm 26.8 oz/sy	1009 gm/sm 29.8 oz/sy
TOTAL WEIGHT	1947 gm/sm 57.4 oz/sy	2054 gm/sm 60.6 oz/sy	2136 gm/sm 63.0 oz/sy	2321 gm/sm 68.4 oz/sy
TOTAL THICKNESS	9.0mm 0.355in	9.0mm 0.355in	9.0mm 0.355in	9.0mm 0.355in
BACKING YARNS	Polyester/ Polypropylene	Polyester/ Polypropylene	Polyester/ Polypropylene	Polyester/ Polypropylene

# DESIGN INDEX:







**AMERICAS**

+1 800 433 2440  
calhoun@royalthai.com

**THAILAND**

+66 2314 5402  
bangkok@royalthai.com

**MIDDLE EAST**

+971 4 451 7659  
dubai@royalthai.com

**UK**

+44 7741 261203  
unitedkingdom@royalthai.com

**INDIA**

+91 124 469 3900  
india@royalthai.com

**SINGAPORE**

+65 6235 2477  
singapore@royalthai.com

**HONG KONG**

+852 2359 8900  
hongkong@royalthai.com

**MACAU**

+852 2359 8900  
macau@royalthai.com

**CHINA**

+86 136 0030 8308  
china@royalthai.com

**ROYALTHAI.COM**